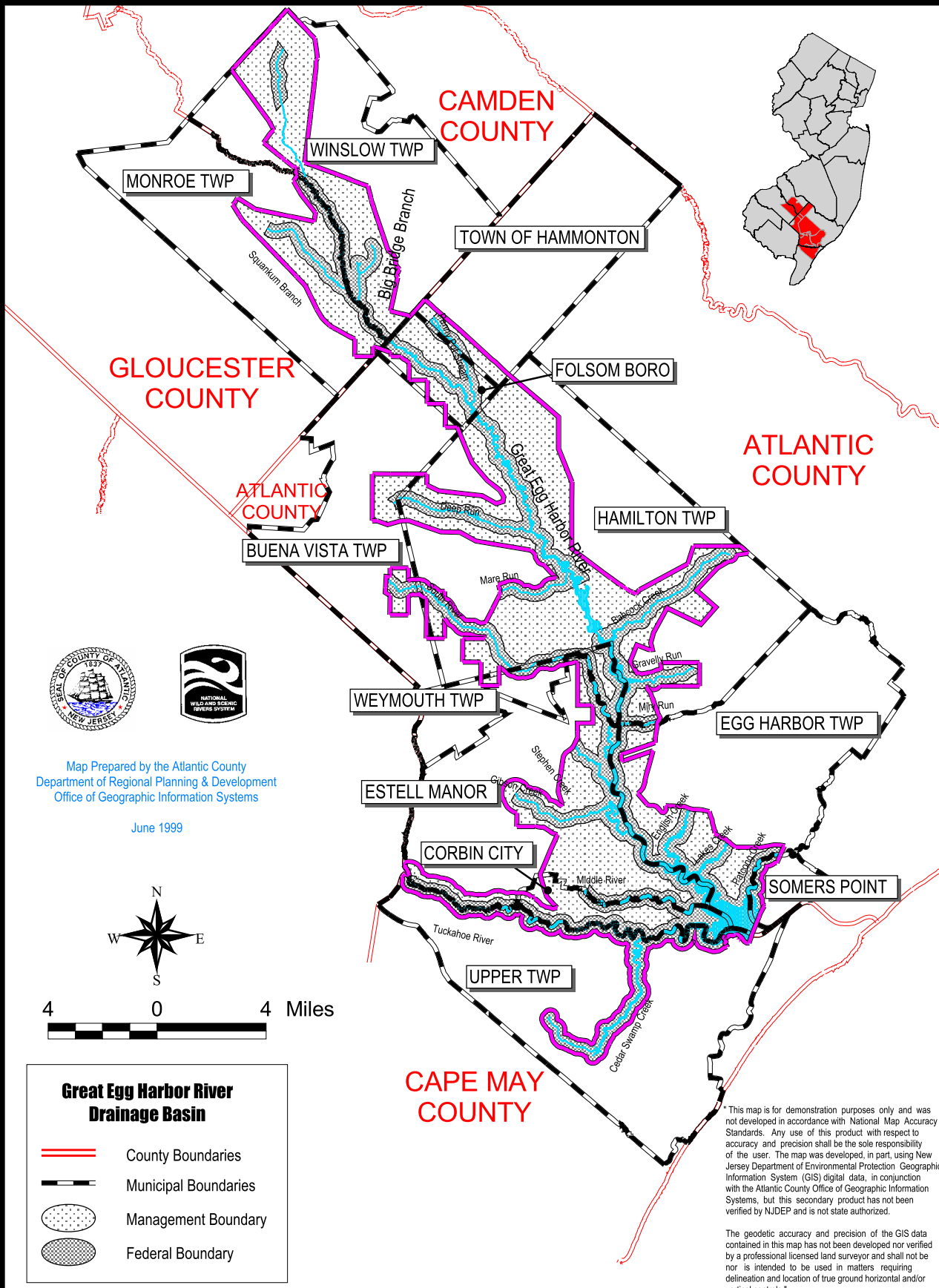


Great Egg Harbor National Scenic & Recreational River



Map Prepared by the Atlantic County
Department of Regional Planning & Development
Office of Geographic Information Systems

June 1999



Great Egg Harbor River Drainage Basin

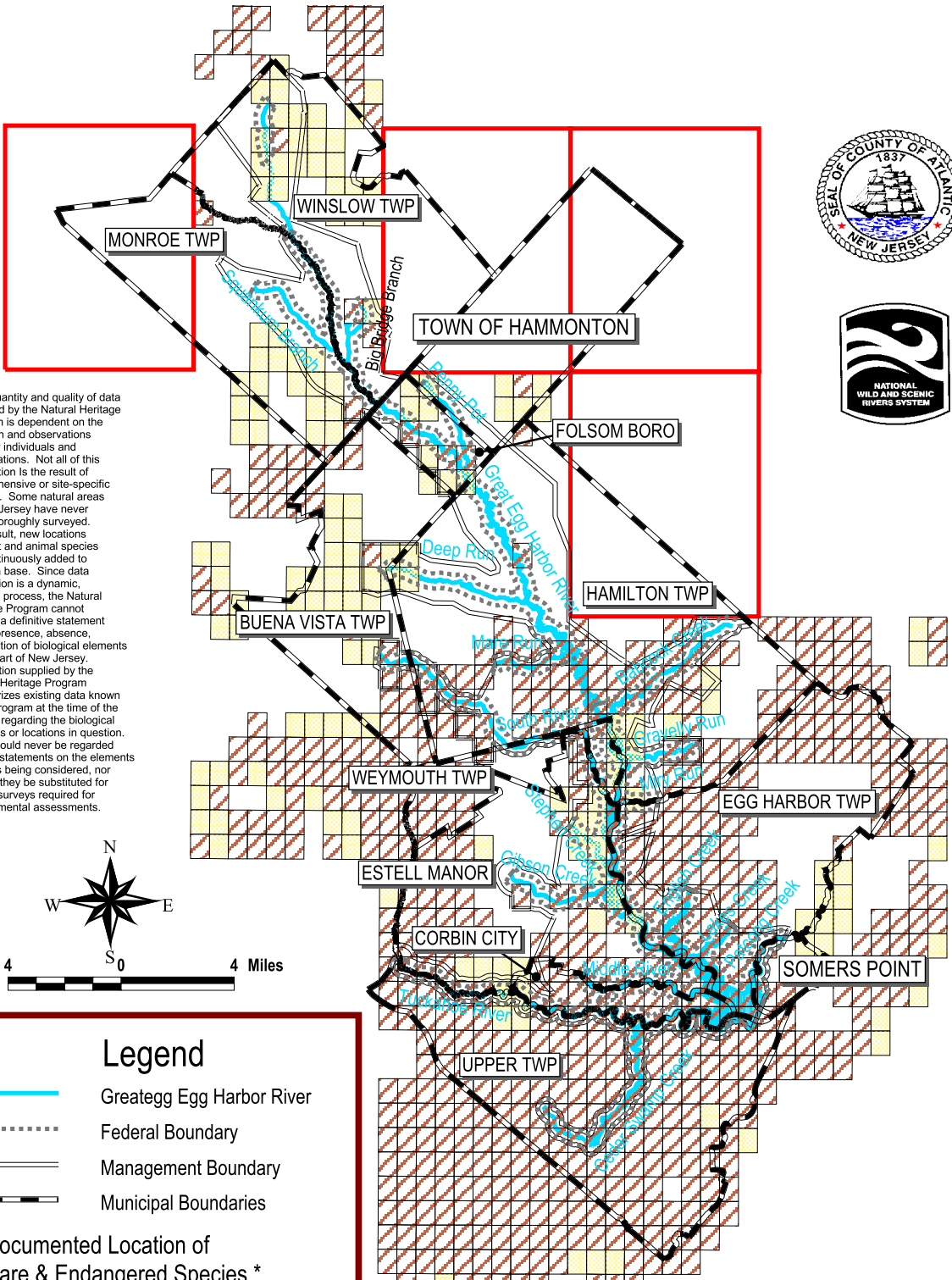
- County Boundaries
- Municipal Boundaries
- Management Boundary
- Federal Boundary

CAPE MAY COUNTY

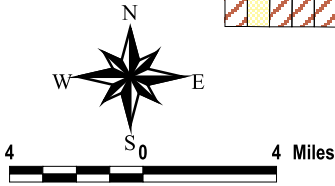
* This map is for demonstration purposes only and was not developed in accordance with National Map Accuracy Standards. Any use of this product with respect to accuracy and precision shall be the sole responsibility of the user. The map was developed, in part, using New Jersey Department of Environmental Protection Geographic Information System (GIS) digital data, in conjunction with the Atlantic County Office of Geographic Information Systems, but this secondary product has not been verified by NJDEP and is not state authorized.

The geodetic accuracy and precision of the GIS data contained in this map has not been developed nor verified by a professional licensed land surveyor and shall not be nor is intended to be used in matters requiring delineation and location of true ground horizontal and/or vertical controls.*

Rare & Endangered Species Great Egg Harbor River



* The quantity and quality of data collected by the Natural Heritage Program is dependent on the research and observations of many individuals and organizations. Not all of this information is the result of comprehensive or site-specific surveys. Some natural areas in New Jersey have never been thoroughly surveyed. As a result, new locations for plant and animal species are continuously added to the data base. Since data acquisition is a dynamic, ongoing process, the Natural Heritage Program cannot provide a definitive statement on the presence, absence or condition of biological elements in any part of New Jersey. Information supplied by the Natural Heritage Program summarizes existing data known to the program at the time of the request regarding the biological elements or locations in question. They should never be regarded as final statements on the elements or areas being considered, nor should they be substituted for on-site surveys required for environmental assessments.



Legend

- Great Egg Harbor River
- Federal Boundary
- Management Boundary
- Municipal Boundaries

Documented Location of Rare & Endangered Species *

- Known Precisely
- Known Within 1.5 Miles
- No Data

Map Prepared by the Atlantic County
Department of Regional Planning & Development
Office of Geographic Information Systems

June 1999

* This map is for demonstration purposes only and was not developed in accordance with National Map Accuracy Standards. Any use of this product with respect to accuracy and precision shall be the sole responsibility of the user. The map was developed, in part, using New Jersey Department of Environmental Protection Geographic Information System (GIS) digital data, in conjunction with the Atlantic County Office of Geographic Information Systems, but this secondary product has not been verified by NJDEP and is not state authorized.

The geodetic accuracy and precision of the GIS data contained in this map has not been developed nor verified by a professional licensed land surveyor and shall not be nor is intended to be used in matters requiring delineation and location of true ground horizontal and/or vertical controls.*

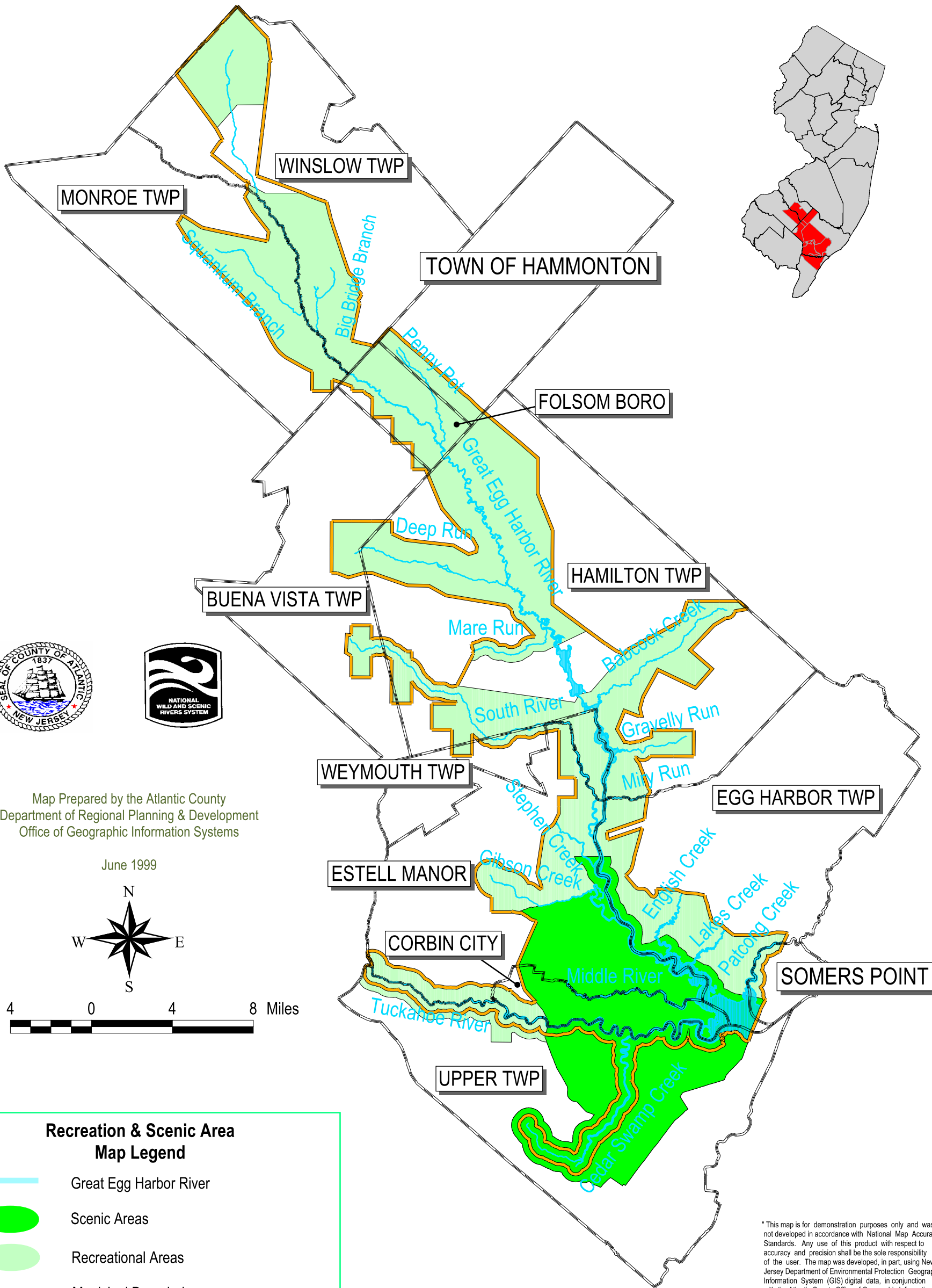
Rare & Endangered Species

Great Egg Harbor River

The quantity and quality of data collected by the Natural Heritage Program is dependent on the research and observations of many individuals and organizations. Not all of this information is the result of comprehensive or site-specific surveys. Some natural areas in New Jersey have never been thoroughly surveyed. As a result, new locations for plant and animal species are continuously added to the database. Since data acquisition is a dynamic, ongoing process, the Natural Heritage Program cannot provide a definitive statement on the presence, absence, or condition of biological elements in any part of New Jersey. Information supplied by the Natural Heritage Program summarizes existing data known to the program at the time of the request regarding the biological elements or locations in question. They should never be regarded as final statements on the elements or areas being considered, nor should they be substituted for on-site surveys required for environmental assessments.

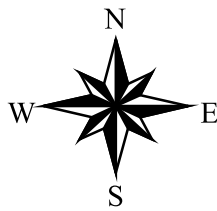
* NOTE: This is not a complete map of rare and endangered species habitat for this area. It reflects data on known occurrences compiled as of OCTOBER 1997. It includes both historically and recently documented habitat. Additional occurrences may be found on unsurveyed habitat. For more information contact the Office of Natural Lands Management CN404, Trenton, NJ 08625.

Great Egg Harbor River Recreational and Scenic Areas






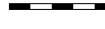

Map Prepared by the Atlantic County
Department of Regional Planning & Development
Office of Geographic Information Systems

June 1999



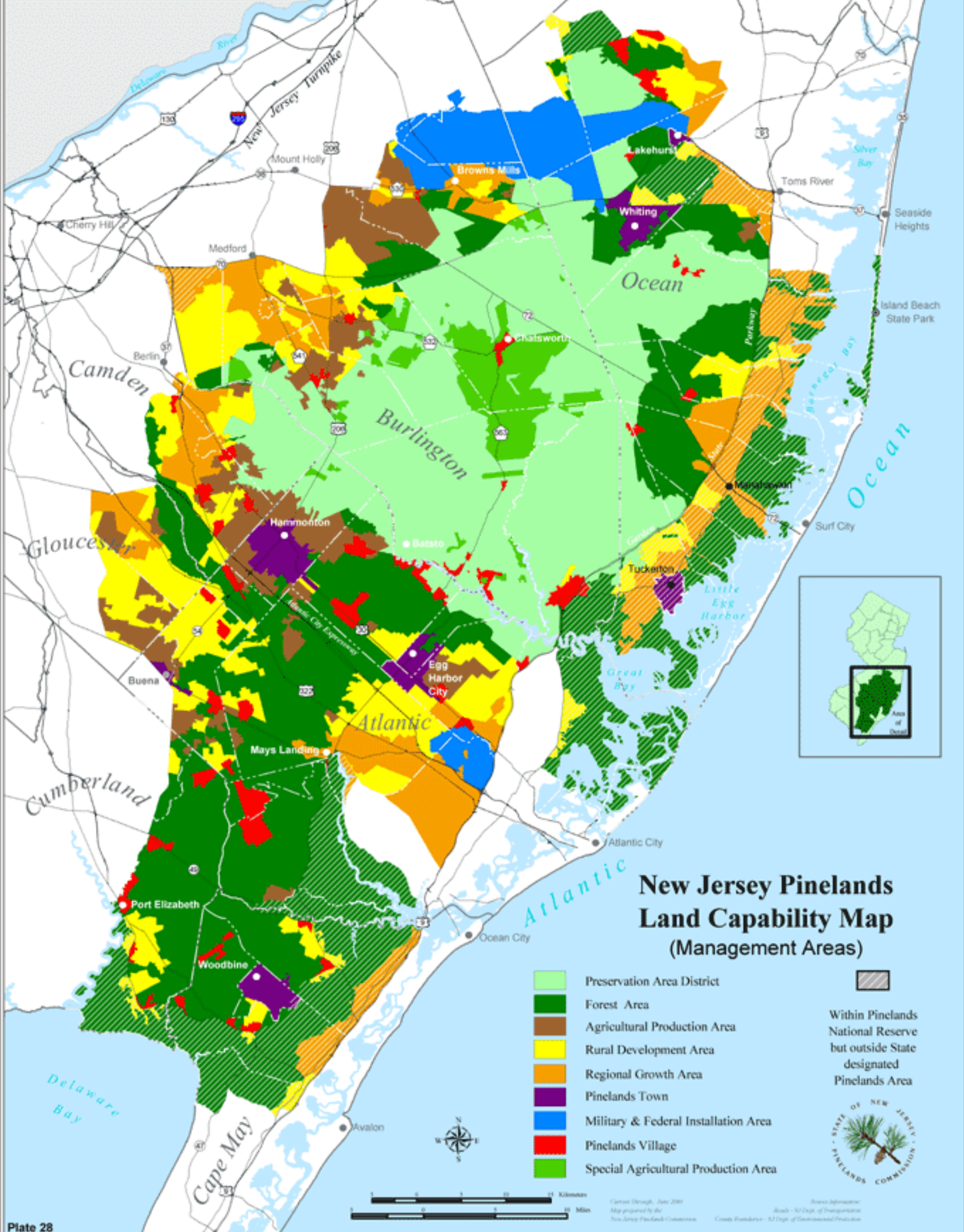
4 0 4 8 Miles

Recreation & Scenic Area Map Legend

-  Great Egg Harbor River
-  Scenic Areas
-  Recreational Areas
-  Municipal Boundaries
-  Management Boundary

"This map is for demonstration purposes only and was not developed in accordance with National Map Accuracy Standards. Any use of this product with respect to accuracy and precision shall be the sole responsibility of the user. The map was developed, in part, using New Jersey Department of Environmental Protection Geographic Information System (GIS) digital data, in conjunction with the Atlantic County Office of Geographic Information Systems, but this secondary product has not been verified by NJDEP and is not state authorized.

The geodetic accuracy and precision of the GIS data contained in this map has not been developed nor verified by a professional licensed land surveyor and shall not be nor is intended to be used in matters requiring delineation and location of true ground horizontal and/or vertical controls."



New Jersey Pinelands Land Capability Map (Management Areas)

- Preservation Area District
- Forest Area
- Agricultural Production Area
- Rural Development Area
- Regional Growth Area
- Pinelands Town
- Military & Federal Installation Area
- Pinelands Village
- Special Agricultural Production Area
- Within Pinelands National Reserve but outside State designated Pinelands Area



Current through June 2005
 Map prepared by the New Jersey Pinelands Commission
 Source Information: Roads - NJ Dept. of Transportation; County Boundaries - NJ Dept. of Environmental Protection

Channel Length and Water Frontage Great Egg Harbor River

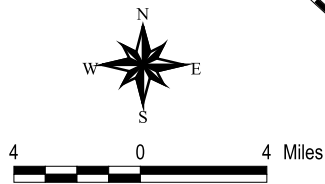


Great Egg Harbor River Drainage Basin

- Stream (Great Egg Harbor River proper)
- - - Tributary
- Municipal Boundaries
- Management Boundary
- Federal Boundary

Map Prepared by the Atlantic County
Department of Regional Planning & Development
Office of Geographic Information Systems

June 1999



The two tables below show the stream channel and the water frontage lengths per municipality and per stream.

Each stream was considered to have two banks even if the stream is of insignificant width. Where the municipal boundary is defined by a stream, each municipality was considered to have one bank of that stream.

* If a stream runs on the boundary between two municipalities, each municipality was considered to have the whole X miles of stream channel. Hence, stream channel miles are duplicated where the municipal boundaries are defined by a stream and the stream lengths per municipality should not be added up to obtain a total.

Stream Channel and Water Frontage Lengths per Stream

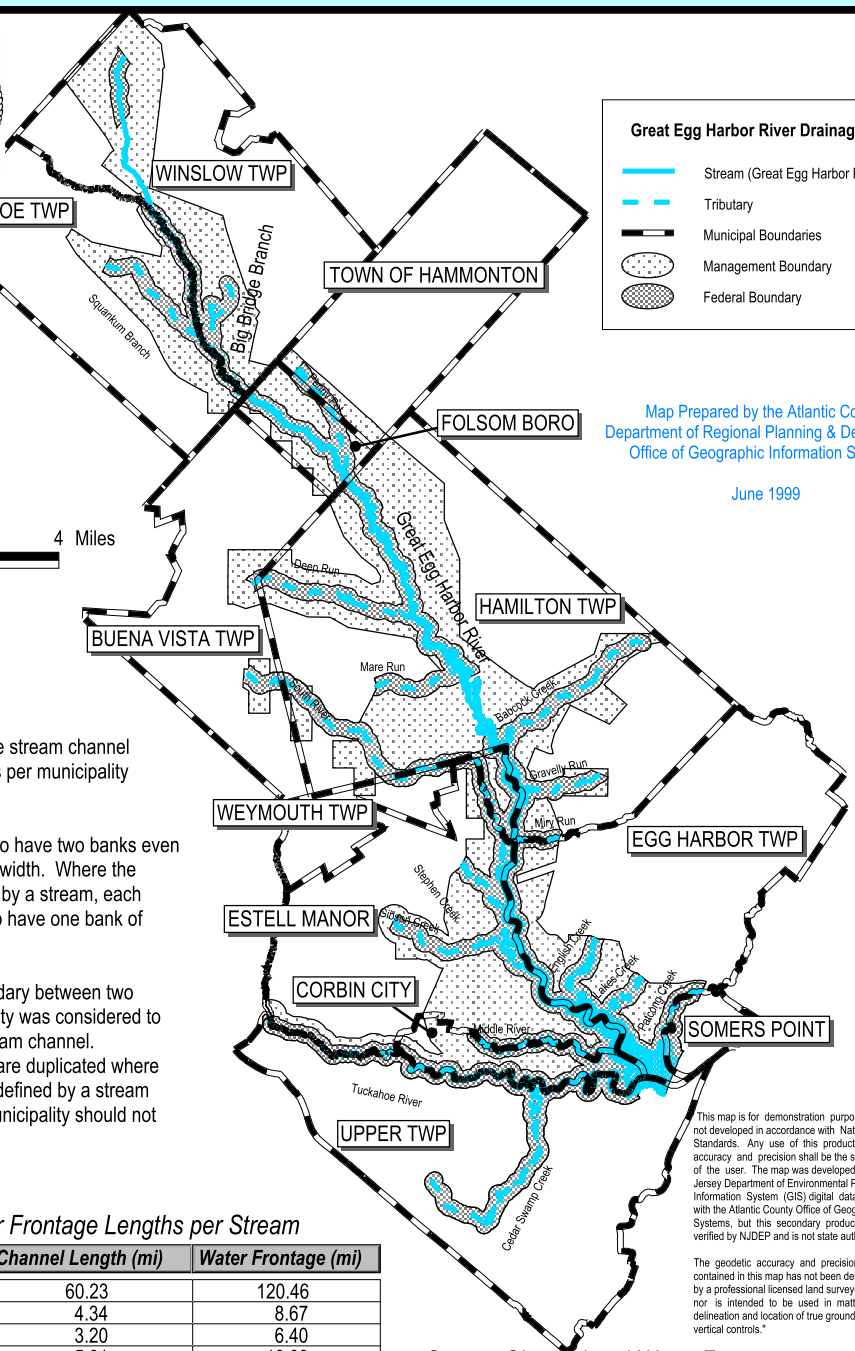
Stream Name	Channel Length (mi)	Water Frontage (mi)
Great Egg Harbor River (proper)	60.23	120.46
Squankum Branch	4.34	8.67
Big Bridge Branch	3.20	6.40
Penny Pot Stream	5.01	10.03
Deep Run	5.89	11.79
Mare Run	3.31	6.63
Babcock Creek	6.95	13.89
Gravelly Run	2.52	5.03
Miry Run	1.59	3.18
South River	15.14	30.28
Stephen Creek	2.62	5.23
Gibson Creek	7.49	14.97
English Creek	4.09	8.19
Lakes Creek	2.65	5.30
Middle River	5.92	11.85
Patcong Creek	3.26	6.52
Tuckahoe River	17.36	34.71
Cedar Swamp Creek	9.20	18.40
Great Egg Harbor (total)	160.76	321.53

Stream Channel and Water Frontage Lengths per Municipality

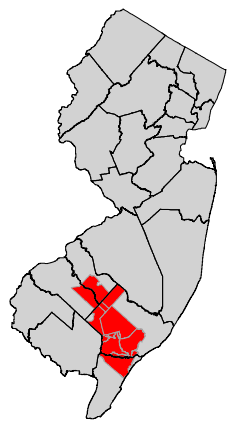
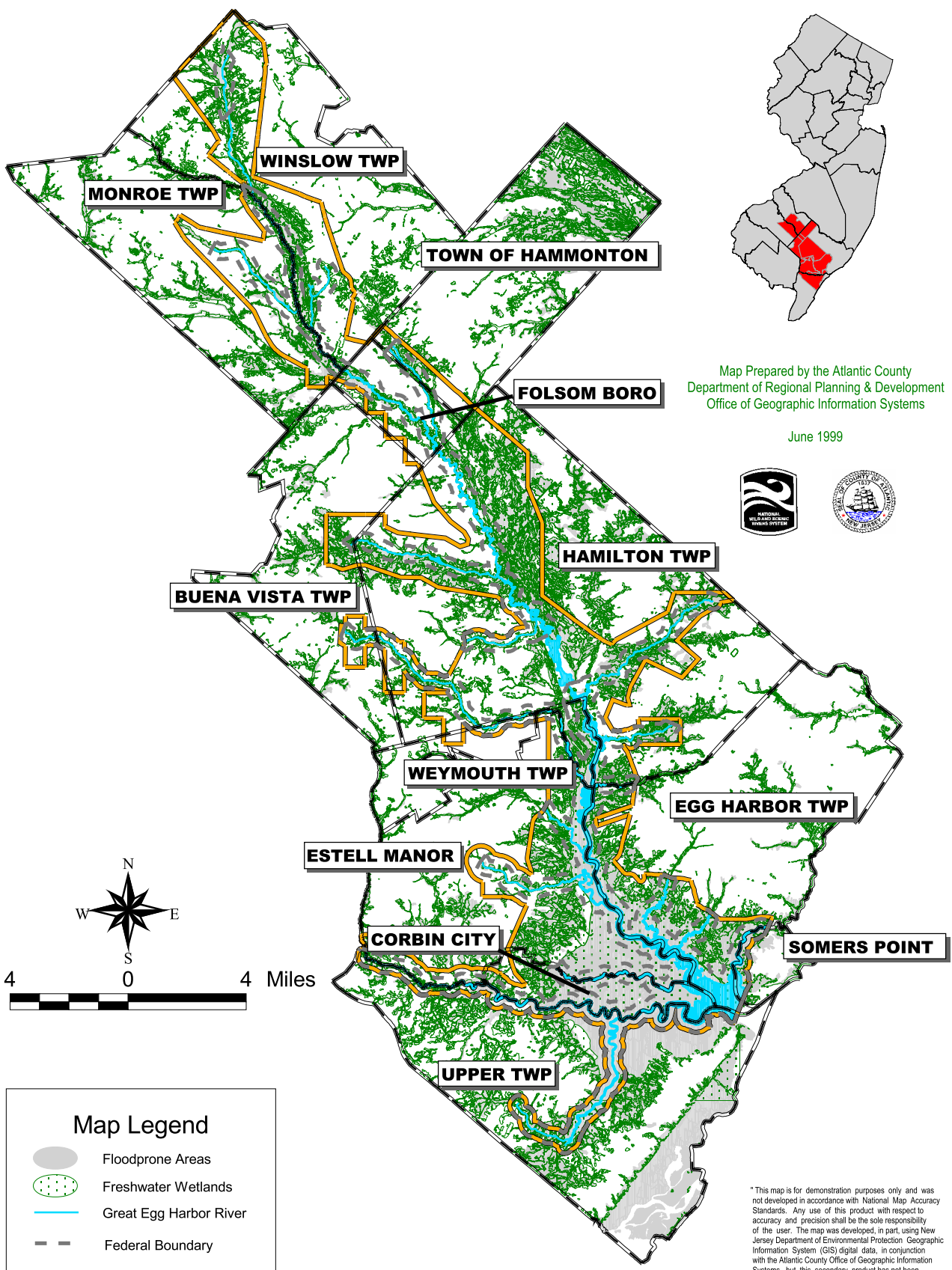
Municipality	Channel Length(mi)*	Frontage (mi)
Buena Vista Twp	1.67	3.35
Egg Harbor Twp	25.13	31.89
Estell Manor	38.87	50.81
Folsom Boro	8.89	17.77
Hamilton Twp	52.53	98.16
Hammonton	2.53	5.07
Monroe Twp	13.24	17.58
Somers Point	3.69	3.69
Upper Twp	28.08	37.27
Weymouth Twp	9.32	10.53
Winslow Twp	17.65	26.39
Corbin City	19.01	19.01

This map is for demonstration purposes only and was not developed in accordance with National Map Accuracy Standards. Any use of this product with respect to accuracy and precision shall be the sole responsibility of the user. The map was developed, in part, using New Jersey Department of Environmental Protection Geographic Information System (GIS) digital data, in conjunction with the Atlantic County Office of Geographic Information Systems, but this secondary product has not been verified by NJDEP and is not state authorized.

The geodetic accuracy and precision of the GIS data contained in this map has not been developed nor verified by a professional licensed land surveyor and shall not be used or intended to be used in matters requiring delineation and location of true ground horizontal and/or vertical controls.*

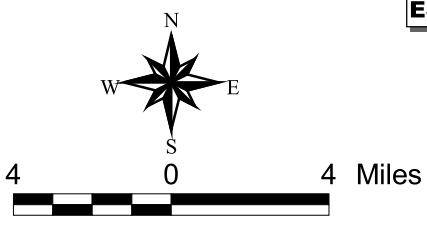


Wetlands and Flood Prone Areas Great Egg Harbor Scenic & Recreational River



Map Prepared by the Atlantic County
Department of Regional Planning & Development
Office of Geographic Information Systems

June 1999

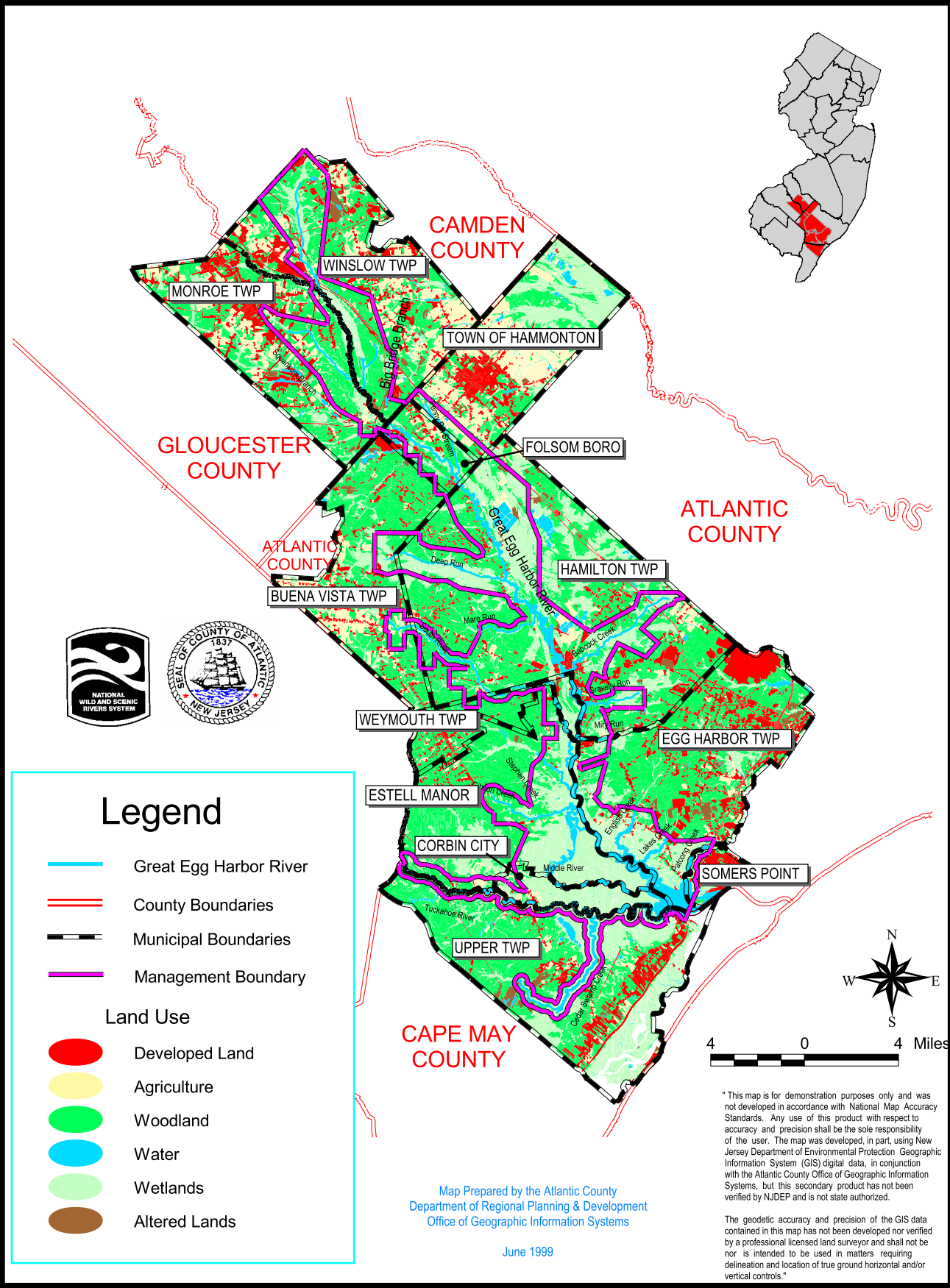


Map Legend	
	Floodprone Areas
	Freshwater Wetlands
	Great Egg Harbor River
	Federal Boundary
	Management Boundary
	Municipal Boundaries

"This map is for demonstration purposes only and was not developed in accordance with National Map Accuracy Standards. Any use of this product with respect to accuracy and precision shall be the sole responsibility of the user. The map was developed, in part, using New Jersey Department of Environmental Protection Geographic Information System (GIS) digital data, in conjunction with the Atlantic County Office of Geographic Information Systems, but this secondary product has not been verified by NJDEP and is not state authorized.

The geodetic accuracy and precision of the GIS data contained in this map has not been developed nor verified by a professional licensed land surveyor and shall not be nor is intended to be used in matters requiring delineation and location of true ground horizontal and/or vertical controls."

Generalized Land-use Great Egg Harbor River



Legend

-  Great Egg Harbor River
 -  County Boundaries
 -  Municipal Boundaries
 -  Management Boundary
- Land Use**
-  Developed Land
 -  Agriculture
 -  Woodland
 -  Water
 -  Wetlands
 -  Altered Lands

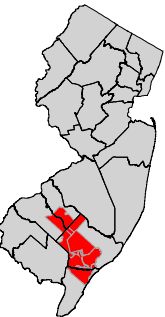
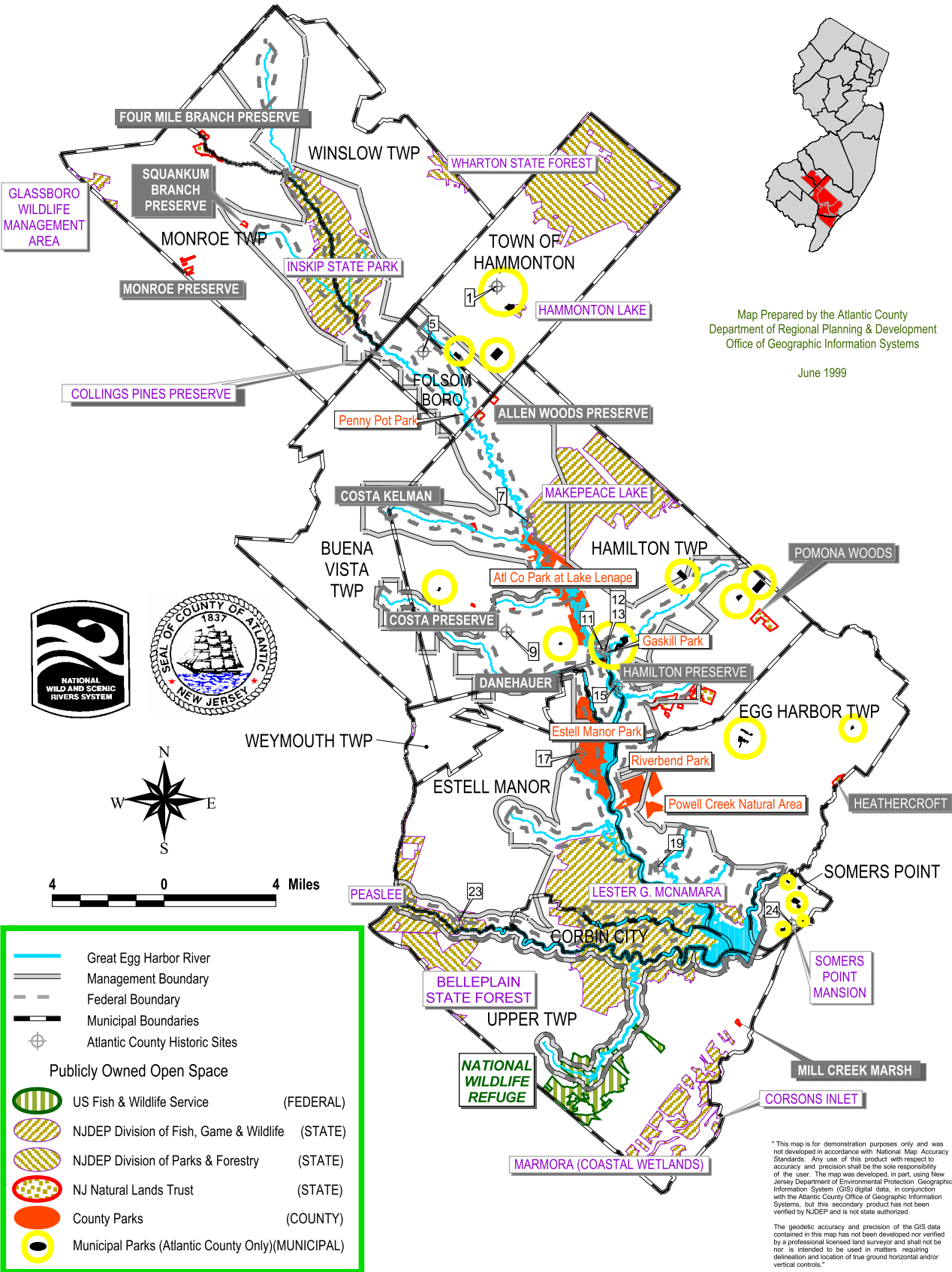
Map Prepared by the Atlantic County
Department of Regional Planning & Development
Office of Geographic Information Systems

June 1999

* This map is for demonstration purposes only and was not developed in accordance with National Map Accuracy Standards. Any use of this product with respect to accuracy and precision shall be the sole responsibility of the user. The map was developed, in part, using New Jersey Department of Environmental Protection Geographic Information System (GIS) digital data, in conjunction with the Atlantic County Office of Geographic Information Systems, but this secondary product has not been verified by NJDEP and is not state authorized.

The geodetic accuracy and precision of the GIS data contained in this map has not been developed nor verified by a professional licensed land surveyor and shall not be nor is intended to be used in matters requiring delineation and location of true ground horizontal and/or vertical controls."

Publicly Owned Open Space and Historic Sites Great Egg Harbor River



Map Prepared by the Atlantic County Department of Regional Planning & Development Office of Geographic Information Systems

June 1999

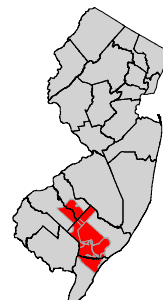


*This map is for demonstration purposes only and was not developed in accordance with National Map Accuracy Standards. Any use of this product with respect to accuracy and precision shall be the sole responsibility of the user. The map was developed, in part, using New Jersey Department of Environmental Protection Geographic Information System (GIS) digital data, in conjunction with the Atlantic County Office of Geographic Information Systems, but this secondary product has not been verified by NJDEP and is not state authorized.

The geodetic accuracy and precision of the GIS data contained in this map has not been developed nor verified by a professional licensed land surveyor and shall not be nor is intended to be used in matters requiring delineation and location of true ground horizontal and/or vertical controls."

Publicly Owned Open Space and Historic Sites

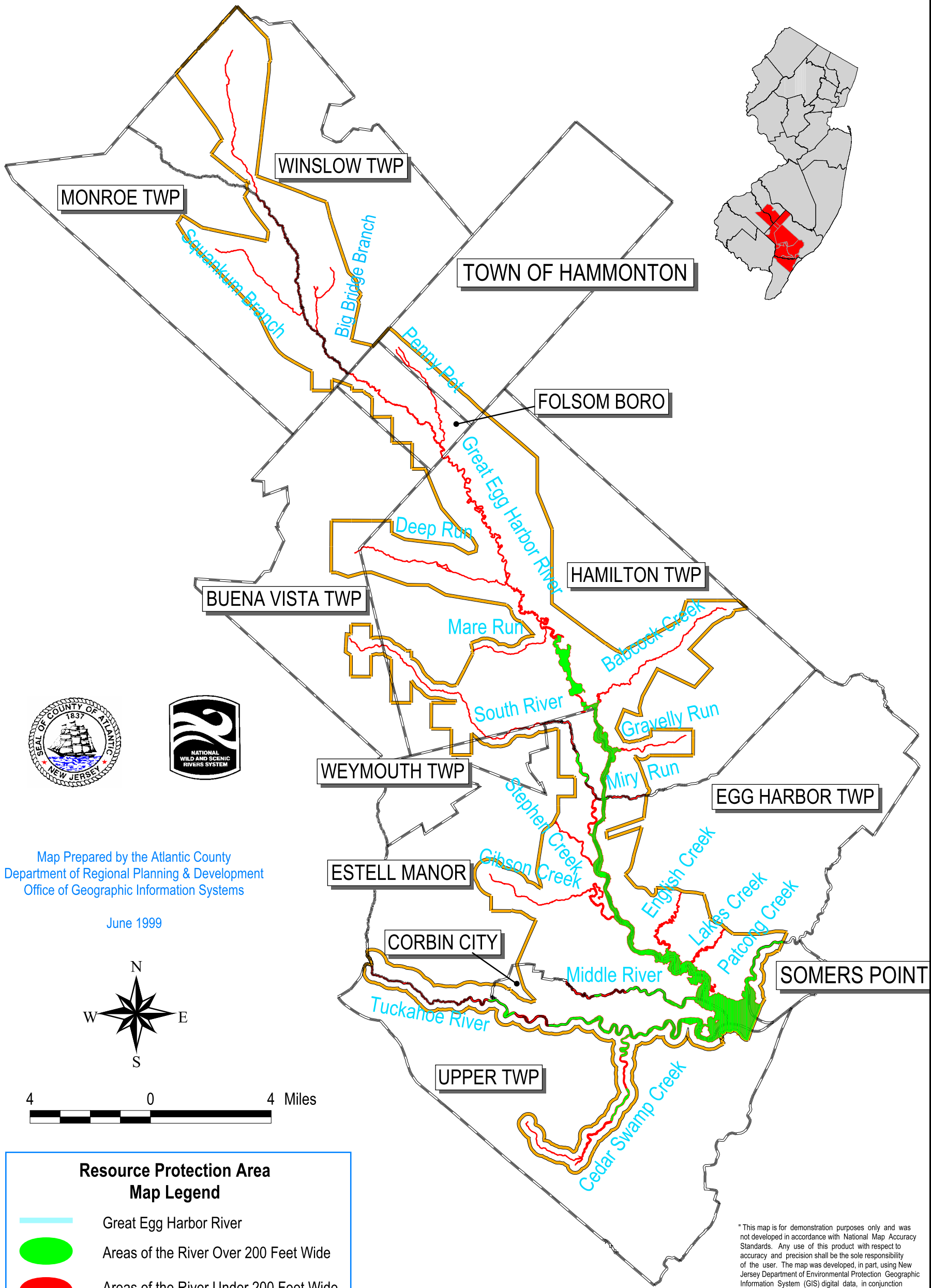
Great Egg Harbor River



No.	Historic Sites (Atlantic County only)
1	William L. Black House
5	Jacobus Evangelical Lutheran Church
7	Weymouth Furnace
9	Balic Winery
11	Mays Landing Presbyterian Church
12	Samuel Richards Hotel
13	American Hotel
15	Schooner Weymouth Wreck
17	Estellville Glassworks District
19	Captain Jeffreys Burial Marker
23	Head of River Church
24	Somers Mansion

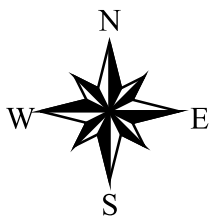
Park/Open Space	Open Space Type	Acres	Agency
Daniel Estell Manor House	Park	43.95	Atlantic County
Estell Manor Park	Park	1811.09	Atlantic County
Gaskill Park	Park	8.82	Atlantic County
Group Camping at Acagisca	Park	63.25	Atlantic County
Kuhnle Property (Weymouth Park)	Park	5.20	Atlantic County
Lake Lenape	Park	1708.06	Atlantic County
Layton Bikeway	Park	0.57	Atlantic County
Penny Pot Park	Park	20.85	Atlantic County
Powell Creek Natural Area	Park/Open Space	148.78	Atlantic County
Riverbend Park	Park	457.29	Atlantic County
Riverbend Park (Nathanson)	Park	203.25	Atlantic County
Veterans Memorial Park	Park	0.65	Atlantic County
Weymouth Furnace Park	Park	3.41	Atlantic County
ALLEN WOODS	PRESERVE	79.11	NJ Natural Lands Trust
BELLEPLAIN	STATE FOREST	10163.60	NJDEP Division of Parks & Forestry
COLLINGS PINES	PRESERVE	5.71	NJ Natural Lands Trust
CORSONS INLET	STATE PARK	136.92	NJDEP Division of Parks & Forestry
COSTA 1ST AVE	PRESERVE	4.67	NJ Natural Lands Trust
COSTA BEACH AVE	PRESERVE	4.49	NJ Natural Lands Trust
COSTA KELMAN	PRESERVE	23.25	NJ Natural Lands Trust
DANEHAUER	PRESERVE	9.44	NJ Natural Lands Trust
FOUR MILE BRANCH	PRESERVE	158.54	NJ Natural Lands Trust
GLASSBORO	WILDLIFE MANAGEMENT AREA	2341.46	NJDEP Division of Fish, Game & Wildlife
HAMILTON	PRESERVE	476.06	NJ Natural Lands Trust
HAMMONTON LAKE	MISC	96.00	NJDEP Division of Parks & Forestry
HEATHERCROFT	PRESERVE	49.34	NJ Natural Lands Trust
LESTER G. MACNAMARA	WILDLIFE MANAGEMENT AREA	14462.81	NJDEP Division of Fish, Game & Wildlife
MAKEPEACE	WILDLIFE MANAGEMENT AREA	7190.25	NJDEP Division of Fish, Game & Wildlife
MARMORA	WILDLIFE MANAGEMENT AREA	2480.32	NJDEP Division of Fish, Game & Wildlife
MILL CREEK MARSH	PRESERVE	12.55	NJ Natural Lands Trust
MONROE	PRESERVE	55.40	NJ Natural Lands Trust
NATIONAL WILDLIFE REFUGE	NATIONAL WILDLIFE REFUGE	2428.25	US Fish & Wildlife Service
PEASLEE	WILDLIFE MANAGEMENT AREA	19213.50	NJDEP Division of Fish, Game & Wildlife
POMONA WOODS	PRESERVE	176.47	NJ Natural Lands Trust
SOMERS POINT MANSION	HISTORIC SITE	0.58	NJDEP Division of Parks & Forestry
SQUANKUM BRANCH	PRESERVE	16.60	NJ Natural Lands Trust
WHARTON	STATE PARK	100682.11	NJDEP Division of Parks & Forestry
WINSLOW	WILDLIFE MANAGEMENT AREA	7053.20	NJDEP Division of Fish, Game & Wildlife

Great Egg Harbor River Resource Protection Area








Map Prepared by the Atlantic County
Department of Regional Planning & Development
Office of Geographic Information Systems

June 1999



4 0 4 Miles

Resource Protection Area Map Legend

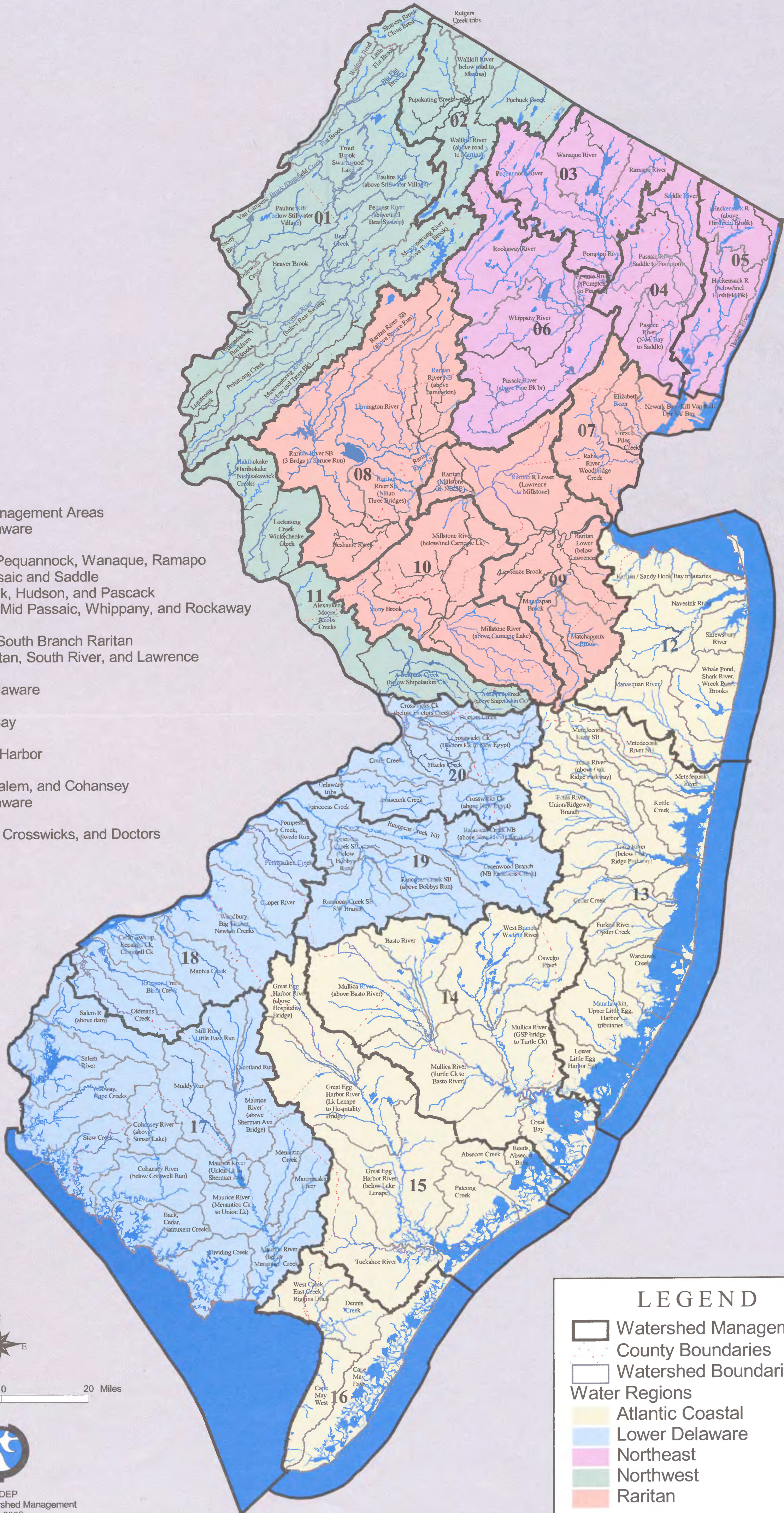
-  Great Egg Harbor River
-  Areas of the River Over 200 Feet Wide
-  Areas of the River Under 200 Feet Wide
-  Municipal Boundaries
-  Management Boundary

" This map is for demonstration purposes only and was not developed in accordance with National Map Accuracy Standards. Any use of this product with respect to accuracy and precision shall be the sole responsibility of the user. The map was developed, in part, using New Jersey Department of Environmental Protection Geographic Information System (GIS) digital data, in conjunction with the Atlantic County Office of Geographic Information Systems, but this secondary product has not been verified by NJDEP and is not state authorized.

The geodetic accuracy and precision of the GIS data contained in this map has not been developed nor verified by a professional licensed land surveyor and shall not be nor is intended to be used in matters requiring delineation and location of true ground horizontal and/or vertical controls."

New Jersey's Watersheds, Watershed Management Areas and Water Regions

- Watershed Management Areas**
01. Upper Delaware
 02. Wallkill
 03. Pompton, Pequannock, Wanaque, Ramapo
 04. Lower Passaic and Saddle
 05. Hackensack, Hudson, and Pascack
 06. Upper and Mid Passaic, Whippany, and Rockaway
 07. Arthur Kill
 08. North and South Branch Raritan
 09. Lower Raritan, South River, and Lawrence
 10. Millstone
 11. Central Delaware
 12. Monmouth
 13. Barnegat Bay
 14. Mullica
 15. Great Egg Harbor
 16. Cape May
 17. Maurice, Salem, and Cohansy
 18. Lower Delaware
 19. Rancocas
 20. Assiscunk, Crosswicks, and Doctors



LEGEND

- Watershed Management Areas
- County Boundaries
- Watershed Boundaries
- Water Regions**
- Atlantic Coastal
- Lower Delaware
- Northeast
- Northwest
- Raritan

0 10 20 Miles

NJDEP
Division of Watershed Management
April 2000