



United States  
Department  
of Agriculture

Forest Service

Six Rivers  
National  
Forest



*Smith River*

**National Recreation Area**

# Management Plan



## The Smith River National Recreation Area

### "The Heart of One of the Largest Wild & Scenic Rivers in the United States"

When Congressman Bosco introduced the National Recreation Area (NRA) legislation, he referred to the Smith River as the "Crown Jewel" of California's Wild and Scenic Rivers. The Tolowa Indians also recognized the River's jewel-like qualities, naming it "Hiouchi," meaning "blue queen." Today, the Smith is the only watershed in California that is undammed. Its crystal-clear water, spectacular scenery and outstanding fishing make the Smith a special place. Dedicated on May 18, 1991 by Congressman Bosco and Governor Wilson, this 305,000 acre NRA is part of the Six Rivers National Forest.

Like the river itself, the NRA was born of years of free-flowing public interest. The unique act creating the NRA divided it into eight management areas and set general policy for each area. Detailed direction was left to the NRA Plan, which the act authorized, for the management of the area and rivers.

Welcome to the grandeur of the Smith River National Recreation Area.

JAMES L. DAVIS, JR.  
Forest Supervisor  
Six Rivers National Forest, USDA

On November 16, 1990, President George Bush signed legislation establishing the Smith River National Recreation Area. The Smith River National Recreation Area Act required the Secretary to ..."revise the document entitled *Smith River National Recreation Area Plan*, dated February 1990 to conform to the provisions of this Act, and such plan shall guide management of the recreation area and shall be incorporated in its entirety into the forest plan for the Six Rivers National Forest."

This plan meets this Congressional direction and is approved for management use effective immediately.

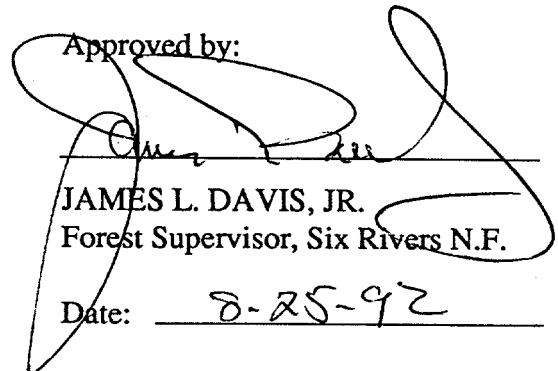
Recommended by:

  
BRIAN N. MORRIS

District Ranger

Date: 8/25/92

Approved by:

  
JAMES L. DAVIS, JR.  
Forest Supervisor, Six Rivers N.F.

Date: 8-25-92

*Explore the Natural Difference!*

*Explore the Wild and Scenic Smith River!*

*Explore Part of the Past!*

October 1992

*Explore the Scenic Byway!*



## **Table of Contents**

<b>Overview of the National Recreation Area</b> .....	2-3
The NRA and the Forest Plan .....	2
Description of the Smith River Area .....	2
Location .....	3
<b>Resources of the National Recreation Area</b> .....	4-15
Wild and Scenic Rivers .....	4-5
Recreation .....	6-8
Fisheries.....	9
Wildlife .....	9
Botanical Areas .....	10
Geology, Soils, and Precipitation .....	11
Timber .....	12
Fire .....	13
Minerals .....	14
Socio-economics .....	14
Cultural .....	15
<b>Management Directions for the NRA</b> .....	16-39
Management Areas within the NRA .....	16-17
Management Direction for all Areas .....	18-20
Management Direction for Wild and Scenic Rivers..	21
Area Specific Management Direction	
North Fork .....	22-23
Upper Middle Fork .....	24-25
Middle Fork .....	26-27
Upper South Fork .....	28-29
Lower South Fork .....	30-31
Lower Hurdygurdy Creek .....	32-33
Prescribed Timber .....	34-37
Siskiyou Wilderness .....	38-39
<b>Ten Year Action Plan</b> .....	40-51
Recreation .....	40-41
Fisheries .....	42-43
Soil and Watershed .....	44-45
Wildlife .....	46
Cultural Resources .....	47
Timber .....	48-49
Fire and Fuels.....	50-51
<b>Appendix</b> .....	52-59
<b>Acknowledgments</b> .....	60

# **Six Rivers National Forest**

**United States  
Department of  
Agriculture  
Forest Service**

*The National Recreation Area is established to ensure the preservation, protection, enhancement, and interpretation of the Smith River's wild and scenic rivers, ecological diversity and recreational opportunities while providing for wise use and sustained productivity of its natural resources.*

### **Purpose of establishment of Area**

The NRA is established to ensure the preservation, protection, enhancement, and interpretation of the Smith River's wild and scenic rivers, ecological diversity and recreational opportunities while providing for wise use and sustained productivity of its natural resources. The area is to provide a broad range of recreation uses, recreational and interpretive sources and facilities, and adequate public access-including roads, trails, and OHV routes. Sustained productivity of its natural resources includes improvement of the anadromous and native trout fisheries, water quality, scenic landscapes, and the protection and enhancement of old growth habitats. Timber harvest is permitted as is common variety mineral extraction for use within the NRA. Mineral development on federal lands is prohibited except for existing valid mineral rights which are subject to the Secretary of Agriculture regulations.

### **The NRA and the Forest Plan**

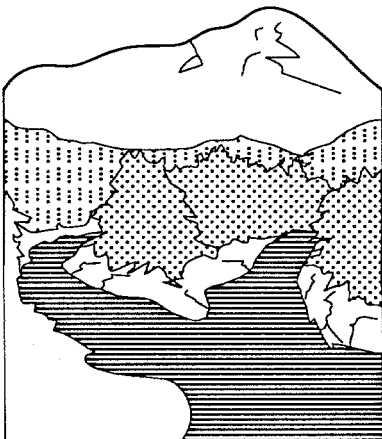
This document will guide management of the Smith River NRA for an interim period. It will be incorporated in its entirety into the Land and Resource Management Plan for the Six Rivers National Forest, which is in final stages of preparation pursuant to section 6 of the Forest and Rangeland Renewable Resources Planning Act of 1974 (16 U.S.C. 1604).

Management direction for the NRA will be periodically amended as necessary, provided such amendments or revisions are consistent with the provisions of the legislation which established the NRA, and processes defined in the NFMA & regulations.

In amending or revising the management direction for the NRA, the Secretary of Agriculture shall consult with State and local government officials, and provide for full public participation considering the views of all interested parties, organizations, and individuals.

### **Description of the Smith River Area**

Located in extreme northwestern California, Smith River National Recreation Area contains the last major undammed river in the state. The Smith River is characterized by exceptionally clear water, a vigorous anadromous fishery, and steep, forested mountains. The area exhibits tremendous diversity, including: lush coastal redwood forests; dense stands of mixed conifers and hardwoods; sparsely vegetated, high elevation plateaus; and high mountain peaks and meadows. Because of this diversity, the Smith River National Recreation Area (NRA) is especially well-suited to a wide variety of uses.

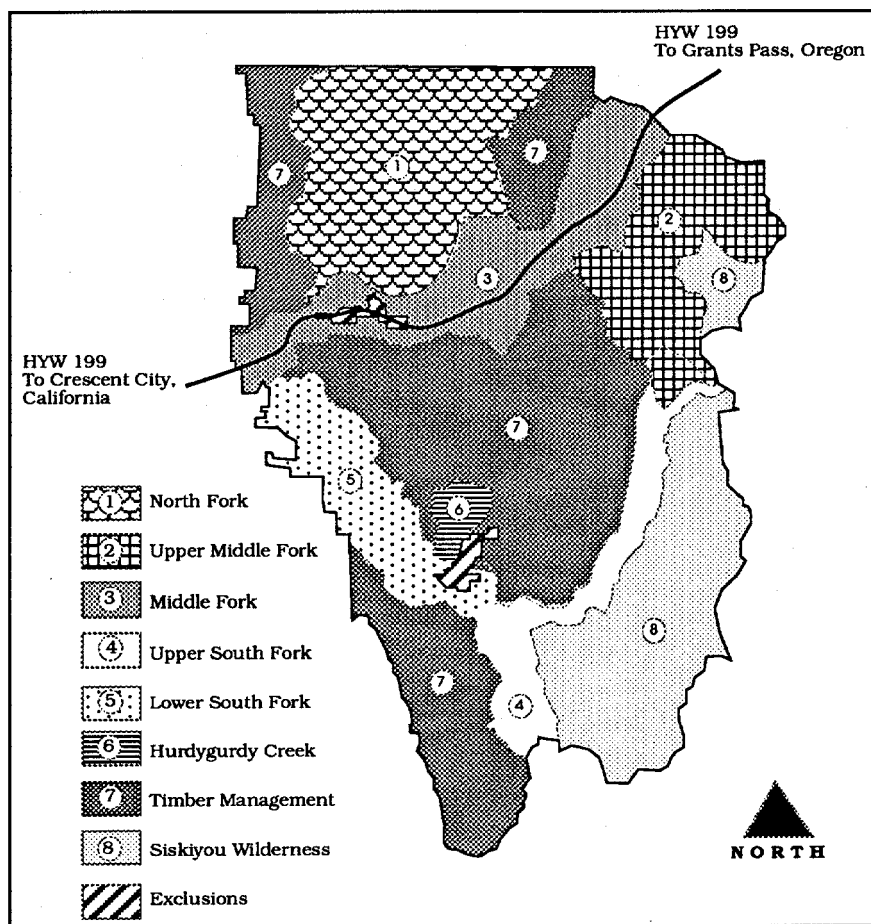
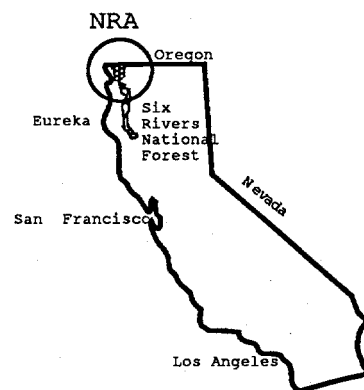


# Management Plan

## Location

The Smith River NRA, located in Del Norte County in northwestern California, is entirely within the Smith River watershed. It is part of the Six Rivers National Forest. It is bordered on the north by the Siskiyou National Forest; on the east by the Klamath National Forest; on the south by the Orleans Ranger District of the Six Rivers National Forest; and on the west, outside the Six Rivers National Forest boundary, by Jedediah Smith Redwoods State Park, scattered parcels of Redwood National Park, Ruby Van Deventer County Park, small residential parcels, and large industrial timber holdings. The closest city outside the NRA is Crescent City to the west on Highway 101. Highway 199 bisects the NRA on its route between Crescent City and Grants Pass, Oregon. The segment of Highway 199 where it crosses the NRA was designated in the summer of 1989 as a National Scenic Byway.

## LOCATION



*Smith River*

**National Recreation Area**

### WILD, SCENIC, AND RECREATIONAL RIVERS

*The Smith River NRA includes the three main forks of the Smith River, numerous tributaries, and a short segment of the main stem.*

#### Wild, Scenic and Recreational Rivers

The Smith River NRA includes the three main forks of the Smith River, numerous tributaries, and a short segment of the main stem. These rivers and tributaries were listed in the Nationwide Rivers Inventory conducted by the National Park Service. These same rivers are part of the California Wild and Scenic River system. In July, 1980, the Governor of California petitioned the Secretary of the Interior to include these rivers and tributaries in the National Wild and Scenic River system under Section 2(a) (ii) of the Wild and Scenic Rivers Act {16 U.S.C. 1271}. A decision on January 19, 1981, by the Secretary of the Interior added the rivers and tributaries to the National system.

With the creation of the Smith River NRA, the segment of the Smith River, its forks and tributaries within the NRA external boundary were re-designated under Section 3(a) of the Wild and Scenic Rivers Act. The Smith River (main stem) and tributaries outside the NRA boundaries, and river segments within the excluded areas, remain designated under section 2 (a) (ii) of the Wild and Scenic Rivers Act pursuant to the Secretary of Interior's 1981 decision. Classification of some tributaries within the NRA was upgraded and some tributaries were added.



*Middle Fork of the Smith River.*

# Management Plan

The wild and scenic river boundaries, as required under the Wild and Scenic Rivers Act, are established in Appendix A, River Corridor Width. Boundaries of the river segments within the excluded areas remain at high water mark under the State of California designation.

✦ The **Main Segment** of the Smith River from the confluence of its Middle and South Forks, to the boundary of the Six Rivers National Forest, plus Rowdy Creek from the California-Oregon border to the National Forest boundary, for management as recreational rivers.

✦ The **Middle Fork** of the Smith River, from the headwaters to its confluence with the South Fork (as Wild/Scenic/Recreational) along with segments of Myrtle Creek (as Wild/Scenic), Hardscrabble Creek (as Recreational), Shelly Creek (as Recreational), Kelly Creek (as Scenic), Packsaddle Creek (as Scenic), East and West Forks of Patrick Creek (as Recreational), Patrick Creek (as Recreational), Little Jones Creek (as Recreational), Griffin Creek (as Recreational), Knopki Creek (as Recreational), and Monkey Creek (as Recreational).

✦ The **North Fork** of the Smith River from the California - Oregon border to its confluence with the Middle Fork (as Wild/Scenic/Recreational) along with segments of Diamond Creek (as Scenic/Recreational), Bear Creek (as Scenic), Still Creek (as Scenic), the North Fork of Diamond Creek (as Recreational), High Plateau Creek (as Scenic), Peridotite Creek (as Wild), and Stony Creek (as Scenic).

✦ The **Siskiyou Fork** of the Smith River, from its headwaters to its confluence with the Middle Fork (as Wild/Recreational), along with the South Siskiyou Fork (as Wild).

✦ The **South Fork** of the Smith River, from its headwaters to the confluence with the Middle Fork (as Wild/Recreational), along with segments of Williams Creek (as Wild), Eightmile Creek (as Wild), Harrington Creek (as Wild), the Prescott Fork of the Smith (as Wild), Quartz Creek (as Recreational), Jones Creek (as Recreational), Hurdygurdy Creek (as Recreational), Gordon Creek (as Recreational), Coon Creek (as Recreational), Craigs Creek (as Recreational), Goose Creek (as Recreational), the East Fork of Goose Creek (as Recreational), Buck Creek (as Wild/Scenic), Muzzleloader Creek (as Recreational), Canthook Creek (as Recreational), Rock Creek (as Recreational), and Blackhawk Creek (as Recreational).

## **WILD, SCENIC, AND RECREATIONAL RIVERS**

*Approximately 299 miles of the Smith River and its tributaries are designated as Wild (78 miles), Recreational (188 miles), and/or Scenic (33 miles).*

### RECREATION

*The Smith River NRA contains one of the most beautiful and diverse watersheds in the world. Recreational opportunities abound...*



*Kayaking on the Smith River.*

The Smith River NRA contains one of the most beautiful and diverse watersheds in the world. Recreational opportunities abound, ranging from exciting whitewater rafting and world-class steelhead fishing to hiking down secluded wilderness trails. All of these uses exist in the backdrop of rugged mountains and crystal clear waters of the Smith River. The unique qualities provided to the National Recreation Area network are the NRA's diversity of recreational uses.

#### ▲ Sightseeing

You don't have to own a backpack to see and appreciate what the Smith River has to offer. From Crescent City on the Coast, the Smith River NRA is only a 20 minute drive through the redwoods on Highway 199. Once in the NRA, the 27 miles of the Smith River National Scenic Byway (highway 199) wind their way along the Middle Fork, offering spectacular views of the river and broad vistas of forested mountains and narrow canyons. There are places to stop and take pictures, picnic, or walk down to the river and enjoy the scenery. Future plans will focus on providing more vista points, day-use areas, interpretive and information facilities, and signs. Currently information and interpretation are provided at the Gasquet Ranger Station, the Collier Rest Area, and by campground hosts.

If you want to see less visited areas off the Scenic Byway, there are roads that will take you, for example, to Middle Fork Falls, old mining country on High Divide, forests managed for wood products and wildlife, or streams recently furnished with habitat improvements for anadromous fish. There are 124 miles of County roads within the NRA, 19 of which are paved. The Forest Service road system includes 142 miles with unrestricted public use, 35 of which are paved.

#### ▲ Fishing

The Smith River has races of salmon and steelhead that are exceptionally large. Because of the NRA's relative isolation, anglers still have the opportunity to pursue these large fish without being crowded. The fishing isn't easy; because of the clarity of the waters, anglers must be extraordinarily cautious not to spook the fish when approaching the river. However, the efforts are worthwhile once a 15 pound steelhead takes the bait.

#### ▲ Camping

The warm inland summer temperatures and sunny weather provide a sharp contrast to the camping offered closer to the coast. There are five campgrounds and two picnic areas in the Smith River NRA. Some of these facilities are barrier-free. All offer close access to the Smith River's magnificent trees and a variety of public service amenities. Improvements to these campgrounds and a new full service facility are planned.



# Management Plan

7

## Trails

The NRA has over 65 miles of designated trails with 2 available shelters. The trail system provides access to a diversity of landforms and recreation. The South-Kelsey Trail was designated a National Recreation trail in 1979. This historic trail dates to the 1850's and was a link from the seaport at Crescent City to Central California's Mother Lode. Today it provides access from the South Fork to the rugged beauty of the Siskiyou Backbone. While the current trail system is small relative to the potential, the trail program will expand significantly as part of the 10 year plan for the NRA. In addition to the planned hiking, stock and OHV trails, there is envisioned interpretive trails through botanical areas and the historic mining districts at Myrtle Creek and Hurdygurdy Creek and a Crest to Coast trail from the ocean beach environs to the high country ecosystems of the coast range.

## Whitewater Boating

Whitewater boating on the Smith is a seasonal sport. The high winter flows provide a challenge to enthusiasts at any level of experience. From the desolate character of the North Fork to the heavily timbered slopes along the South Fork, the Smith River offers excitement and outstanding views that cannot otherwise be experienced. Depending on stream flows the mild climate permits this exciting use year around.

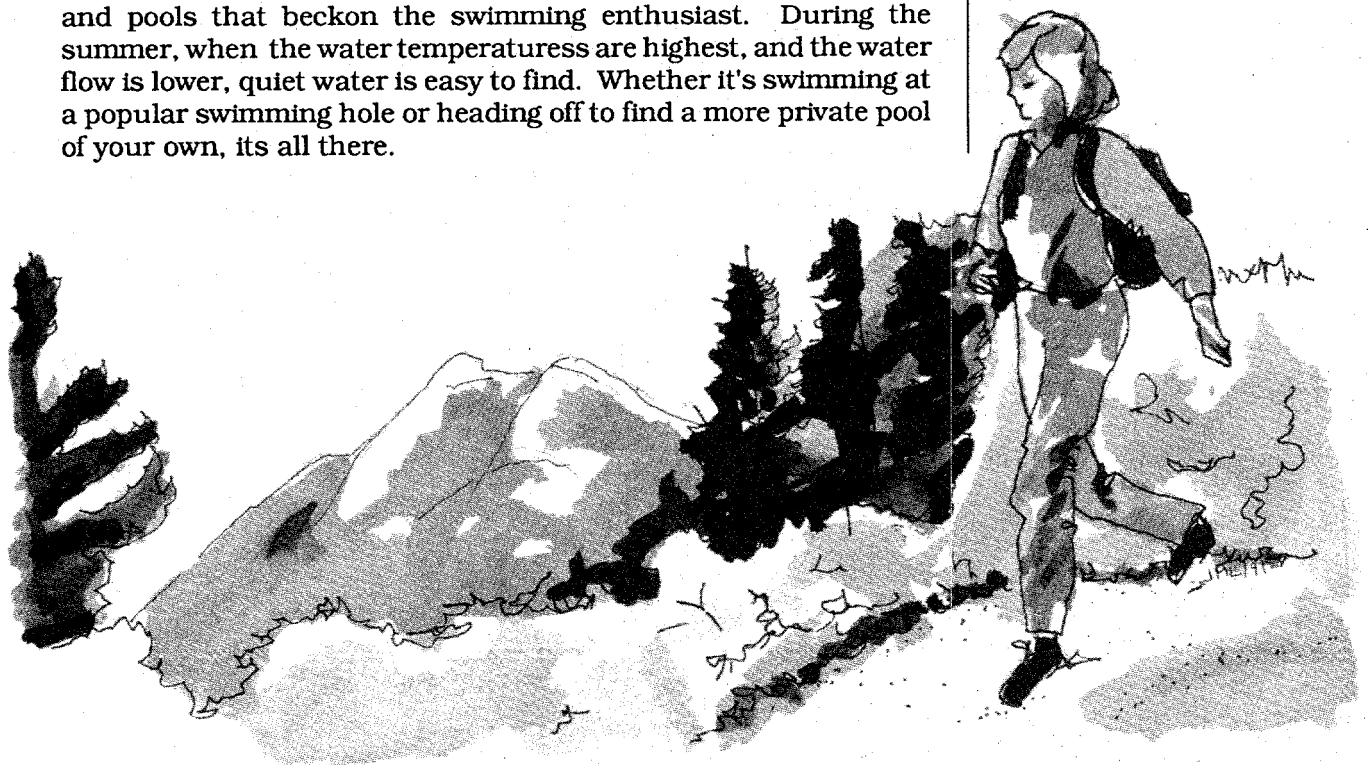
## Swimming

The Smith River has a seemingly endless supply of sun, beaches and pools that beckon the swimming enthusiast. During the summer, when the water temperatures are highest, and the water flow is lower, quiet water is easy to find. Whether it's swimming at a popular swimming hole or heading off to find a more private pool of your own, its all there.

## RECREATION



*Accessible campsite at Panther Flat Campground.*



## **RECREATION**

*The Siskiyou Wilderness provides for a more solitary and primitive recreation experience. The northern portion has very steep topography...the southern portion consists of steep inner gorges, knife-edge and rounded ridges, open mountain valleys and sheer rock faces.*

### **▲ Wilderness**

The Siskiyou Wilderness provides for a more solitary and primitive recreation experience. The northern portion of the Siskiyou Wilderness has very steep topography, especially adjacent to streams. New trails are envisioned for the area to compliment existing trails. The southern portion of the Siskiyou Wilderness consists of steep inner gorges, knife-edge and rounded ridges, open mountain valleys and sheer rock faces. Unlike the northern portion, this area has good trail access, including: the South Kelsey National Recreation Trail traversing the area from west to east, the Boundary Trail on high Siskiyou Crest, and the Summit Valley Trail. Wilderness opportunities include hiking, camping, hunting, and solitude.

### **▲ Off Highway Vehicle Use**

Off highway vehicle use will be permitted on "designated routes" only. Access to these routes is limited to the dry season only (normally from May through October).

## **Fisheries**

The Smith River NRA includes one of the best salmon and steelhead fisheries on the west coast, with 176 miles of streams with anadromous fish habitat and 114 miles of streams available to anglers seeking quiet and solitude while fishing for resident native trout. The six lakes in the NRA range in size from 0.7 to 6.1 acres, and are stocked with rainbow or brook trout by the California Department of Fish and Game (CDF&G). Three lakes are within the wilderness; the other lakes are accessible by roads.

Improvement of anadromous fish habitat, ongoing since 1980, has been done primarily to increase spawning and rearing habitat for salmon and steelhead in tributary streams. An important component of the fish habitat improvement program is the use of Coordinated Resource Management Planning (CRMP). This program facilitates the expansion of the habitat improvement work on both federal and privately-owned stream sections through working agreements with other agencies and individuals. Additional improvement work and interpretive facilities are planned.

## **Wildlife**

The variety and abundance of vegetation and habitat components on the NRA influence the vast number and kinds of wildlife found there. Over 300 species of wildlife occur in the Smith River NRA. Bald eagles and peregrine falcons, seen in the NRA, are listed as national endangered species. The northern spotted owl is listed as a threatened species. Marten, fisher, and goshawk are considered sensitive species by the Forest Service.

Hunting is one of the favored pursuits in the area. Quail, rabbits, deer, and bear are typically hunted game species. A variety of non-game songbirds and raptors, small mammals, amphibians, and reptiles provide for public viewing and photo opportunities.

## **Administration of the Wildlife Resource**

The Forest Service and California Department of Fish & Game (CDF&G) cooperate in the administration and management of the wildlife resource. The Forest Service is responsible for habitat management and improvement. The CDF&G is responsible for managing fish and game. In addition, the CDF&G helps identify and finance habitat improvement projects, studies, and research.

## **FISHERIES**

*One of the best salmon and steelhead fisheries on the West Coast.*

## **WILDLIFE**

*The variety and abundance of vegetation and habitat influences the vast number and kinds of wildlife found in the NRA.*

## BOTANICAL AREAS

### Botanical Areas

In order to protect and interpret the unique botanical communities and areas which are unusually good representations of vegetative types, seven botanical areas have been established, Appendix B.

#### 🌲 L.E. Horton Darlingtonia Bog (Zone 1)

Set aside to protect the unique Darlingtonia bog plant community.

#### 🌲 Smith River Botanical Area (Zone 1)

Contains a rich concentration of rare and endemic plant species due to the serpentine and peridotite soils. McDonald's rock-cress (*Arabis macdonaldiana*), a federally listed endangered species, has been found in several locations within the area. Five additional plant species considered sensitive by the Forest Service are known to inhabit the area. At least 12 other endemic species that have very limited distributions also occur here.

#### 🌲 Broken Rib & Bear Basin Butte (Zones 2 & 4)

Protected due to their exceptionally high conifer diversity. Some of these conifers are near or at the limits of their ranges, resulting in many normally disjunct species being closely associated. Bear Basin Butte area also includes a large wet meadow.

#### 🌲 Myrtle Creek Botanical Area (Zone 3)

A botanically rich area containing redwood, mixed conifers and one sensitive plant species.

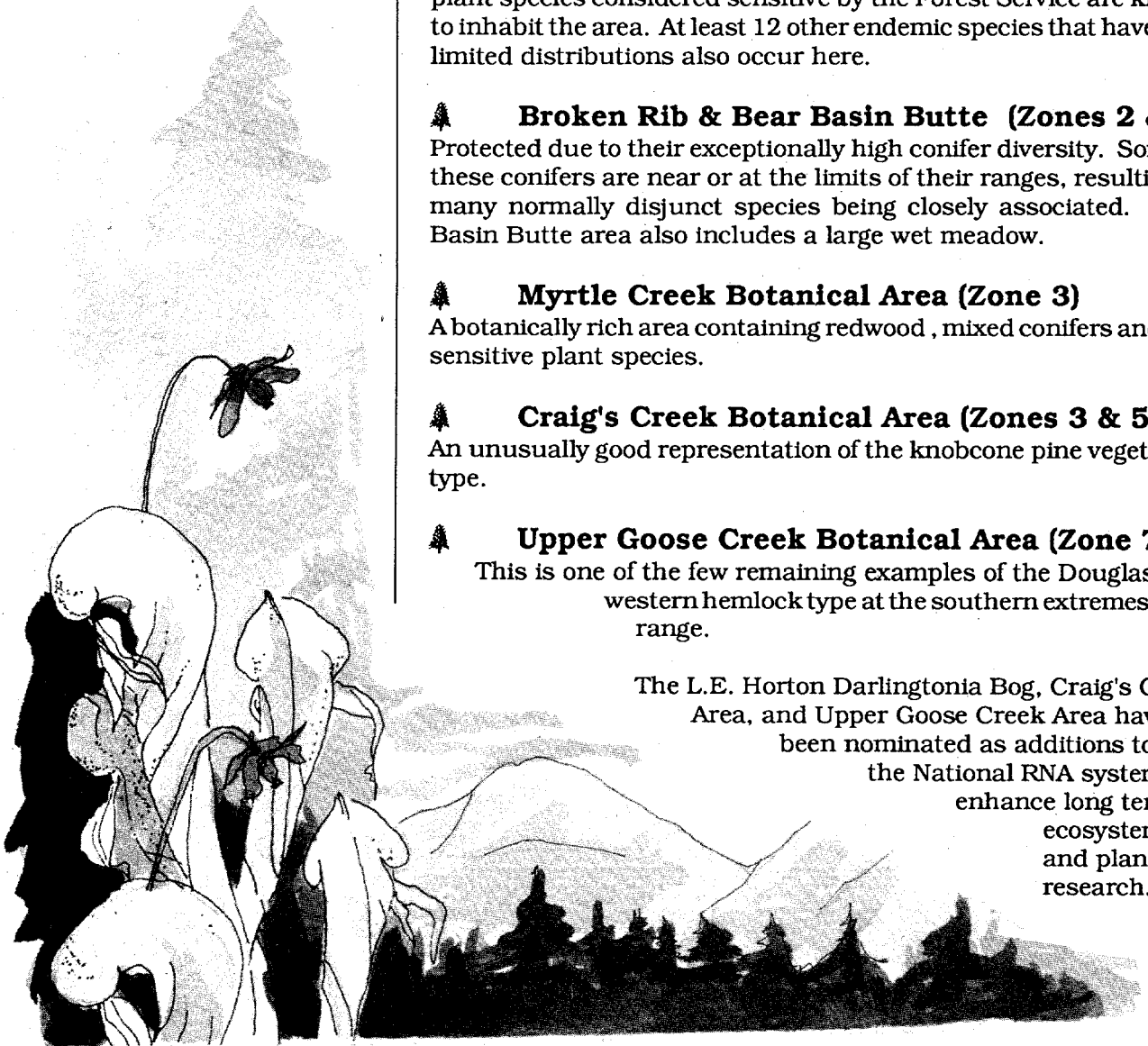
#### 🌲 Craig's Creek Botanical Area (Zones 3 & 5)

An unusually good representation of the knobcone pine vegetation type.

#### 🌲 Upper Goose Creek Botanical Area (Zone 7)

This is one of the few remaining examples of the Douglas-fir/western hemlock type at the southern extremes of its range.

The L.E. Horton Darlingtonia Bog, Craig's Creek Area, and Upper Goose Creek Area have been nominated as additions to the National RNA system to enhance long term ecosystem and plant research.



## Geology

The Smith River watershed is underlain by complex and interesting geological materials. The Coast Range Thrust Fault is a major break between Franciscan metasedimentary rocks of the Coast Range Province and the Josephine Ophiolite of the Klamath Mountain Province. The ophiolite is an unusual suite of mostly crystalline rocks (peridotite, gabbro, basalt and intermixed serpentine) that comprised the upper mantle and overlying oceanic crust about 200 million years ago. Uplifted by earth forces and exposed by prolonged erosion, these durable rocks are responsible for much of the scenic qualities of the Smith River canyon, as well as the water clarity. Many of the rapids are located on what geologists call greenstone, a metamorphosed basalt. Along the eastern watershed boundary in the Siskiyou Wildernss, there are diorites and granites similar to those in the Sierra. In the vicinity of Gasquet, remnants of younger, partly cemented marine sands and gravels are perched hundreds of feet above the valley floor. Rapid uplift has caused the canyon to be cut, and that downcutting has produced many spectacular landslides in the geologic past along the major drainages. Landslide debris forms many of the large alluvial terraces along the Middle and South Forks. The combination of durable bedrock materials and high natural landslide rates has contributed to the high quality anadromous fishery in the Smith River.

## Soils

Many of the soils that have developed on the rocks within the Smith River watershed are unusually resistant to erosion, despite the high natural landslide rates. The majority of the area has generally productive forest soils. Soils derived from the serpentine rocks in the western portion of the drainage, by contrast, are often nonproductive forest soils but may contain quantities of metals such as nickel, chromium, or copper. Much of the area's past mineral exploration was concentrated within this area.

## Precipitation

Precipitation normally occurs from November through April in the form of rain below 4000 feet, with snow at higher elevations. Precipitation amounts are among the highest in the US with average annual totals from 96-150". The highest annual precipitation recorded in the lower 48 States was 254.9" which occurred in the NRA at Camp Six in 1981-1982. Runoff is variable, fluctuating in direct response to individual storms. Snowmelt does not normally contribute an identifiable increase in runoff. The Smith is unusual in that even during very high winter flows, the river retains a relatively clear appearance. The lower turbidity of the water during the winter rains is due primarily to the erosion resistant nature of the soil and the enormous flushing power of the river.

## GEOLOGY, SOILS, & PRECIPITATION

*Uplifted by earth forces and exposed by prolonged erosion, these durable rocks are responsible for much of the scenic qualities of the Smith River as well as the water clarity.*

*The Smith River is unusual in that even during very high winter flows, the river retains a relatively clear appearance.*

**TIMBER**

*Timber is an important and valuable renewable resource within the Smith River watershed.*

**Timber Management**

Timber is an important and valuable renewable resource, both on private and National Forest lands within the Smith River watershed. During the early days of settlement, timber was utilized for mining and local structural purposes. Later, redwood from the coastal areas of the drainage was exported to markets outside the area.

Timber management within the boundaries of federal lands inside the Smith River NRA began in the early 1950s. Most private ownerships have been logged and are currently growing new stands of timber. Since the early 1950s, approximately one billion board feet of timber has been harvested from federal lands within the area. The primary timber harvest species is Douglas-fir, although appreciable amounts of white fir, sugar pine, and Port-Orford-cedar are also harvested. In addition, minor amounts of redwood, Jeffrey pine and incense cedar are harvested. Approximately 24,000 acres of suitable timber land are in plantations ranging from 1-40 years of age. The area also provides a significant amount of firewood. Tanoak, madrone, chinquapin, and Douglas-fir are most frequently used for this purpose.



*Plantation of Douglas-fir in a timber management area.*

Future timber harvests will be undertaken in some of the management areas within the NRA. Silviculturists will be designing harvest prescriptions to maintain or enhance biological diversity and wildlife habitats by extending rotation length and leaving standing trees, snags, and woody debris piles in areas where timber management is subordinate to wildlife and visual quality considerations. Treatments such as broadcast burning, planting, release and thinning will continue to be used to ensure a high level of structural and compositional diversity in managed stands.

## **Port-Orford-cedar Root Disease**

Port-Orford-cedar, a native tree in southwestern Oregon and northwestern California, is being attacked by a fatal root disease. The disease was first noticed in 1922 in landscape plantings, hedges and windbreaks. By 1952, the disease had spread into the Oregon backcountry from infected seedlings planted on homesites in lowland and mountain drainages. Runoff water, streamflow, cattle, and vehicles carried the soil transported disease through the watershed, killing Port-Orford-cedar trees in its path. In 1980, the disease was spotted in California for the first time.

The causes of spread are trucks, road building and logging equipment, mining operations, off-highway vehicles and recreational vehicles that carry mud containing the disease from infested to uninfested drainages. Aggressive management of the disease under the auspices of the Interregional Port-Orford-cedar Coordinating Group will continue.

## **Fire Management**

Fire occurrence records for the period 1970-1988 indicate an average of 10 fires per year in the NRA, with 78 percent human-caused and 22 percent lightning-caused. During the same period, there were only three fires which exceeded 300 acres. Throughout the Smith River drainage there is evidence of infrequent, but reoccurring, large fires. These large fires occurred during extended droughts and were supported by heavy fuel accumulations.

During fire season, detection and suppression activities are a cooperative effort between the Forest Service, California Department of Forestry and Fire Protection, and neighboring State and National Park Service units.

*Future timber harvests will be undertaken in some of the management areas within the NRA. Silviculturists will be designing harvest prescriptions to maintain or enhance biological diversity and wildlife habitat.*

## **FIRE**

## MINERALS

*Exploration of minerals has played an important historic role in the Smith River watershed.*



*Hydraulic monotors on the Ore Grande Mine in the 1930's.*

## SOCIO-ECONOMICS

*Logging and fishing are still important industries but Del Norte County is making an effort to diversify its economic base and increase tourism.*

### Minerals

Exploration of minerals has played an important historic role in the Smith River watershed. News of gold in the Smith River brought many miners to Del Norte County in the 1850s. Since then, exploration has continued on an intermittent basis.

The serpentinized areas in the watershed, chiefly in the North Fork drainage, contain laterite-soil deposits of cobalt, nickel, and chromium, as well as small lode deposits of copper, mercury, and chromium. Commercial development of the laterite deposits was proposed in the late 1970s but proved to be sub-economic upon detailed assessment.

Commercial mines in the watershed have operated only during the Civil War (for copper), and during both World Wars (for chromium). Currently hundreds of mining claims are held, but there is very little mining activity other than recreational gold panning and dredging. Mining claims still exist for minerals such as gold, cobalt, nickel, and chromium, with small extraction operations, mainly in the form of suction dredging for gold.

### Socio-economics

Del Norte County residents long depended on commercial ocean fishing and logging for jobs and income. These are still important industries although not to the extent they were in the past. The county is making an effort to diversify its economic base and increase tourism. Several physical and demographic processes are underway. The county's population increased by roughly 20 percent during 1989-1991, and may grow as much as 30-40 percent in the next decade. This influx is largely due to employment and indirect growth resulting from Pelican Bay State Prison, near Crescent City. Subdivision of private property, both within and adjacent to the NRA, and the encroachment of residential construction into the wildland will continue for several years. These demographic processes will increase recreation and other resource uses in the NRA.



## Cultural Resources

The first people to use the Smith watershed entered it about 6,000 years ago. They were primarily nomadic hunters who used the higher elevation areas. Over the last 2500 years these groups became more socially complex, organized, and stationary. Their activities were concentrated along the rivers where the food supply was abundant. Miners entered the Smith River around 1850, in search of gold. In 1850-51 the 200 mile South-Kelsey trail was built, linking the gold fields in Siskiyou County and the seaport at Crescent City. Although there were sporadic finds, gold mining in this region was not as profitable as in other areas. Later, during the Civil War, copper mining was undertaken in the Gasquet Mountain area. These were small, underground mines. Most of the ore was shipped around Cape Horn to support the Union armies. The Alta Mine, the largest copper mine in the area, probably had its start during this period. During World War II, the area saw mining return, this time for chromium. Evidence of past mining is best represented in the Myrtle Creek and Hurdygurdy Creek mining districts, and provides opportunities for public interpretation of this historic land use.

## CULTURAL RESOURCES

*Native Americans, Miners, Mountain Men, and the Civilian Conservation Corps are all part of the Smith River NRA's rich cultural history.*



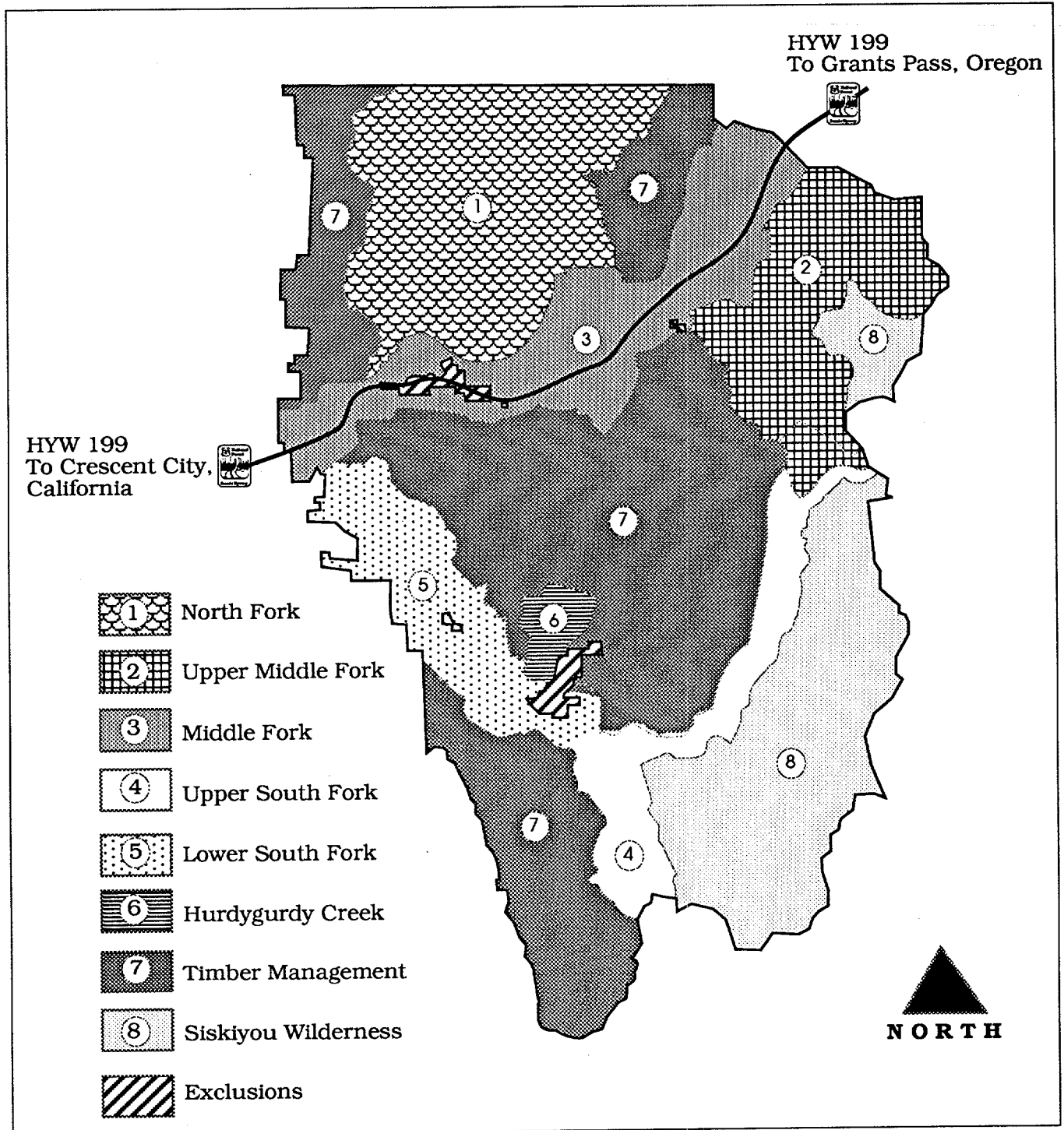
*Forest Service Ranger's residence on the Gasquet Ranger's Station built by the CCCs in 1930's.*

### Management Areas within the NRA

The land within the NRA is partitioned into eight management areas. The individual areas have been delineated based upon resource capability, emphasizing recreation, to focus and clarify management direction for each region within the NRA.

Management Area	Management Emphasis
<b>1. North Fork</b> (55,550 acres)	<ul style="list-style-type: none"> <li>➤ back country and white water recreation</li> <li>➤ unique botanical communities</li> <li>➤ historic values and scenic values</li> </ul>
<b>2. Upper Middle Fork</b> (30,000 acres)	<ul style="list-style-type: none"> <li>➤ providing and maintaining ecologic and biologic diversity</li> <li>➤ timber harvest only in existing plantations emphasizing biological diversity and wildlife and old growth habitats</li> </ul>
<b>3. Middle Fork/Hwy 199</b> (38,400 acres)	<ul style="list-style-type: none"> <li>➤ maintaining wildlife values</li> <li>➤ scenic &amp; recreation values of the Smith River</li> <li>➤ full range of recreational uses</li> <li>➤ Scenic Byway - Highway 199</li> </ul>
<b>4. Upper South Fork</b> (21,450 acres)	<ul style="list-style-type: none"> <li>➤ wild river uses and roadless backcountry recreation</li> </ul>
<b>5. Lower South Fork</b> (20,000 acres)	<ul style="list-style-type: none"> <li>➤ maintenance of wildlife and scenic values</li> <li>➤ river sports</li> <li>➤ sight-seeing</li> <li>➤ developed and dispersed recreation</li> <li>➤ limited uneven aged timber management</li> </ul>
<b>6. Lower Hurdygurdy</b> (4,000 acres)	<ul style="list-style-type: none"> <li>➤ maintenance of wildlife and scenic values</li> <li>➤ rustic family and group recreation</li> <li>➤ limited uneven aged timber management</li> <li>➤ interpretation and monitoring</li> </ul>
<b>7. Prescribed Timber</b> (84,500 acres)	<ul style="list-style-type: none"> <li>➤ sustained yield of wood products</li> <li>➤ biological and ecological diversity</li> </ul>
<b>8. Siskiyou Wilderness</b> (51,400 acres)	<ul style="list-style-type: none"> <li>➤ wilderness management</li> </ul>

# Management Plan



*Smith River*  
National Recreation Area

Management Area Map

**NRA  
MANAGEMENT  
DIRECTION  
FOR ALL  
AREAS**

The following management direction is common to all areas within the Smith River NRA. It supplements existing direction contained in laws and implements regulations, including Forest Service manuals, handbooks, and interim Forest Standards and Guides. Further management direction is provided in this document for each management area where there are unique emphases.

**Management of the NRA shall:**

1. Provide for a broad range of recreational uses and provide recreational and interpretive services and facilities (including trails and campgrounds) for the public.
2. Provide and maintain adequate public access, including vehicular roads for general recreational activities such as camping, hiking, hunting and fishing.
3. Improve the anadromous fishery and water quality, including (but not limited to), stabilizing landslides, improving fish spawning and rearing habitat, and placing appropriate restrictions or limitations on soil-disturbing activities.
4. Permit the use of off-highway vehicles only on designated routes.
5. Provide for the public's health and safety and for the protection of the NRA in the event of fire or infestation of insects or disease.
6. Emphasize stewardship of the land to sustain its many values and uses. Considers the philosophies of New Perspectives, stewardship first, and ecological and biological diversity. Utilizes integrated (interdisciplinary) resource approaches consistent with applicable laws and regulations to determine appropriate stewardship activities and approaches.
7. Preserve stands and groves of old-growth redwood. Individual large trees in scenic areas will also be retained. Isolated redwood trees in timber production areas may be removed.
8. Consistent with applicable requirements of law, permit removal of trees in those management areas where timber harvest is not specifically authorized, when necessary for human health and safety, to maintain trails or existing roads, for the development of recreation or other facilities, for the protection of the recreation area in the event of fire, or to improve fish and wildlife habitat. Timber damaged or downed in these areas as a result of fire, insects, disease, blowdown or other natural events shall otherwise be retained in its natural condition, with removal permitted only upon written determination by the Secretary of Agriculture, based upon written findings, that such removal is necessary to provide for or

maintain or enhance biological and ecological diversity, without regard for the commodity value of the timber. Such a decision shall not be delegable by the Secretary but shall be subject to administrative appeal and judicial review.

9. Permit programmed timber harvest only in those management areas where timber harvest is specifically authorized. Timber management in these areas shall incorporate the use of strategies to reduce habitat fragmentation and employ silvicultural prescriptions designed to maintain or enhance biological diversity and wildlife habitats (such as retention of standing green trees, snags, and other coarse woody debris) by providing for a high level of structural and compositional diversity in managed stands.

10. Provide for the long-term viability and presence of Port-Orford-cedar and ensure its continued present economic and noneconomic uses through implementation of management strategies developed by the Forest Service.

11. Except where timber harvest is specifically authorized in the NRA Act, protect, preserve, and increase old growth forest habitat.

12. Provide for the restoration of landscapes damaged by past human activity consistent with the NRA Act.

13. Develop a monitoring program to consistently gather water quality, air quality, wildlife and fisheries data from representative Smith River sub-watersheds.

14. Develop and implement a management plan to maintain, protect, and promote habitat for native resident trout species in the recreation area.

15. Cooperate with other Federal, State, and local government agencies in coordinating planning efforts throughout the Smith River watershed.

16. Acquire by purchase, donation, exchange or otherwise lands, waters, or interests therein, including scenic or other easements, and structures or other improvements on lands so acquired within the boundaries of the NRA. An offer to sell, exchange or otherwise dispose of such property by an individual or organization will be given prompt consideration.

17. Suppress wildfires within the boundaries of the NRA. No restrictions will be in effect that differentiate suppression techniques inside the NRA from those on surrounding lands.

## **NRA MANAGEMENT DIRECTION FOR ALL AREAS**

**NRA  
MANAGEMENT  
DIRECTION  
FOR ALL  
AREAS**

18. Not limit, restrict, or require specific management practices on National Forest System lands outside the recreation area boundary. The fact that activities or uses outside the NRA can be seen, heard or otherwise perceived within the recreation area shall not, of itself, limit, restrict, or preclude such activities or uses up to the boundary of the recreation area.

19. Design post-wildfire recovery to obliterate, as much as is practical, the evidence of the suppression activities.

20. Design wildfire related reforestation, if any, to be commensurate with the objectives of the management area.

21. Through the Secretary of Agriculture, issue supplementary mineral regulations to promote and protect the purposes for which the NRA is designated. When completed, these regulations will be added as an appendix to this plan.

22. Subject to valid existing rights, Federal lands within the exterior boundary for the NRA are hereby withdrawn from all forms of locations, entry, and patent under United States mining laws and from disposition under the mineral leasing laws, including all laws pertaining to geothermal leasing.

23. Not issue patents under the mining laws of the United States for locations and claims made before the date of enactment of this Act on Federal lands located within the exterior boundaries of the NRA.

24. Subject to valid existing rights all public lands within the recreation area are hereby withdrawn from entry, sale, or other disposition under the public land laws of the United States. This subsection shall not affect the exchange authorities of the Secretary.

25. Fish and wildlife habitat management practices will be designed to coordinate effective applications under the Forest Service's Fish and Wildlife Habitat Relationship Programs.

## Area Specific Management Direction

River and stream segments designated as wild and scenic rivers in section 10(b) of the Smith River NRA Act, shall be administered in accordance with this Act and the Wild and Scenic Rivers Act. In the case of conflict between the provisions of these Acts, the more restrictive provision shall apply.

For each of the river and stream segments specified in the Smith River NRA Act, streamside protection zones were established. (For specific designations and river boundaries see the map and table of classified rivers and corridor widths in the Appendix A.) For rivers and stream segments designated by the Act three streamside protection zones were established.

**300 Feet:** The 300 foot streamside protection zone shall extend 300 feet from each bank, or 100 feet from the inner gorge, or within the limit of high and extreme landslide hazards on said rivers and river segments, whichever is greater.

**One-quarter Mile:** The one-quarter mile streamside protection zone shall extend on the average of one-quarter mile on either side, or 100 feet from the inner gorge, or within the limit of high and extreme landslide hazards on said rivers and river segments, whichever is greater.

**One-eighth Mile:** This zone shall extend one-eighth mile on either side of Lower Hurdygurdy Creek, from Dry Lake to its confluence with the South Fork of the Smith River.

Removal of trees within specified streamside protection zones will occur only when necessary for human health and safety, to maintain trails or existing roads, for the development of recreation and other facilities, for the protection of the recreation area in the event of fire, or to improve fish and wildlife habitat.

Subsection 10(c) of the Smith River National Recreation Area Act, provides that this management plan is deemed to satisfy the requirements for a comprehensive management plan required under section 3(d) (1) of the Wild and Scenic Rivers Act.

## WILD, SCENIC AND RECREATIONAL RIVERS



*Rafting on the Scenic Middle Fork of the Smith River.*

## **NORTH FORK Management Area #1**

### **Management Emphasis**

*is on back-country and  
whitewater recreation,  
while recognizing the  
unique botanical  
communities,  
outstanding whitewater,  
and historic and scenic*

### **Area Specific Management Direction**

The North Fork Management Area's rugged character is the result of its infertile, mineral rich soils. While sparse, the vegetative component of the ecosystem contains many unique botanical communities, perhaps best exemplified by the *Darlingtonia* plant communities, which are often found around perennial seeps in the area. The 14 miles of designated Wild River provide exciting whitewater rafting experiences in a primitive and pristine environment. This area also contains most of the historic mines and mining roads found in the NRA. The abundant access these roads provide, along with the unusually erosion resistant soils, provide an excellent opportunity for managed OHV use.

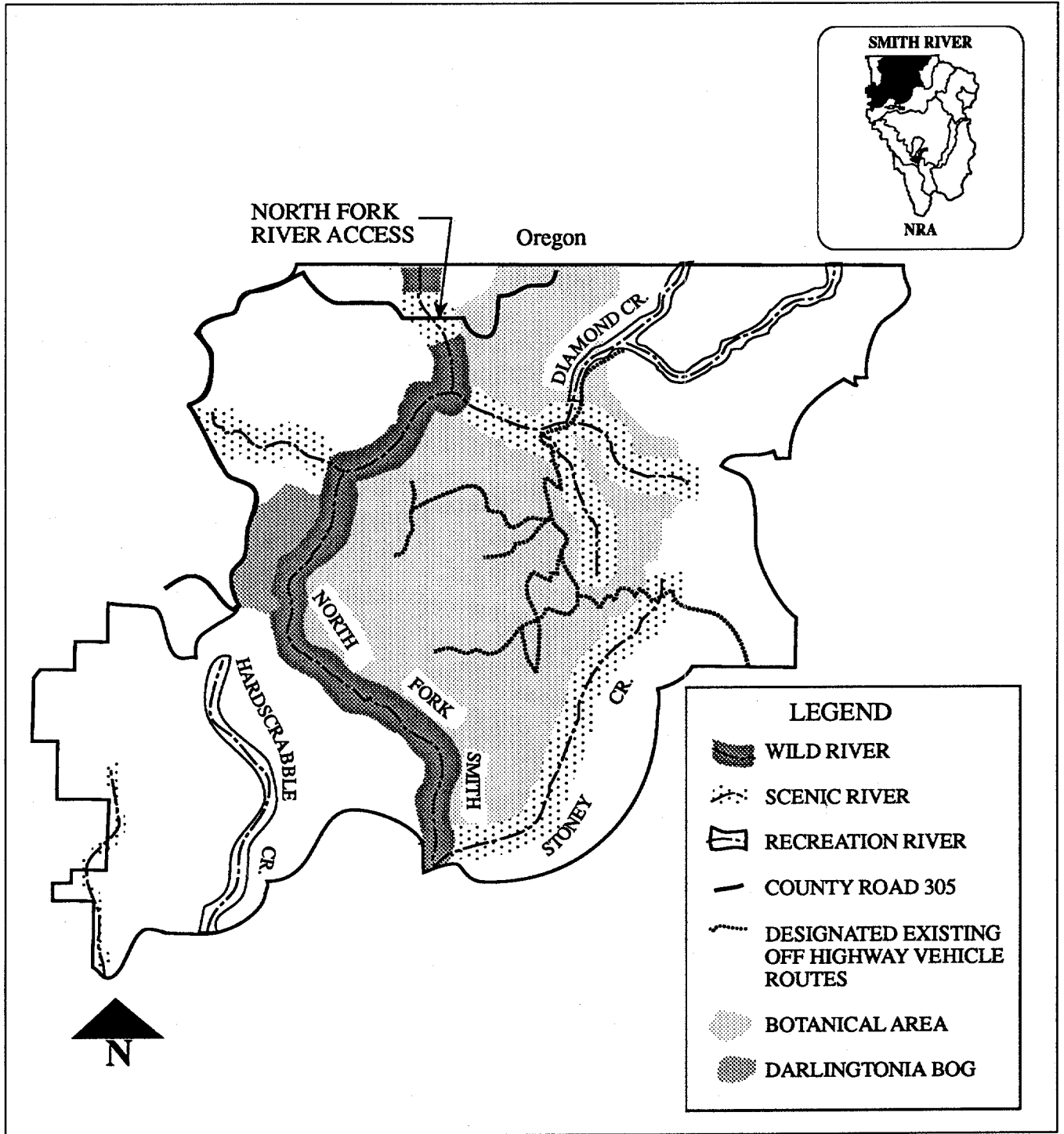
### **Direction**

The NRA shall:

- a) Provide and maintain facilities for information services and recreation activities which are compatible with the Wild, Scenic or Recreational River designations, including: hiking, camping, white water boating, off-highway vehicle use on designated trails, and hunting.
- b) Provide access for river use through National Forest Systems Lands or by acquisition, including scenic and other easements.
- c) Allow vegetative management to enhance public recreation, scenic quality, game and nongame wildlife species, and the protection and enhancement of threatened, endangered or sensitive species.



# Management Plan



**UPPER  
MIDDLE FORK  
Management  
Area # 2**

**Management Emphasis**  
*is to provide and  
maintain ecological and  
biological diversity.  
Timber harvesting will be  
permitted in plantations  
only.*

**Area Specific Management Direction**

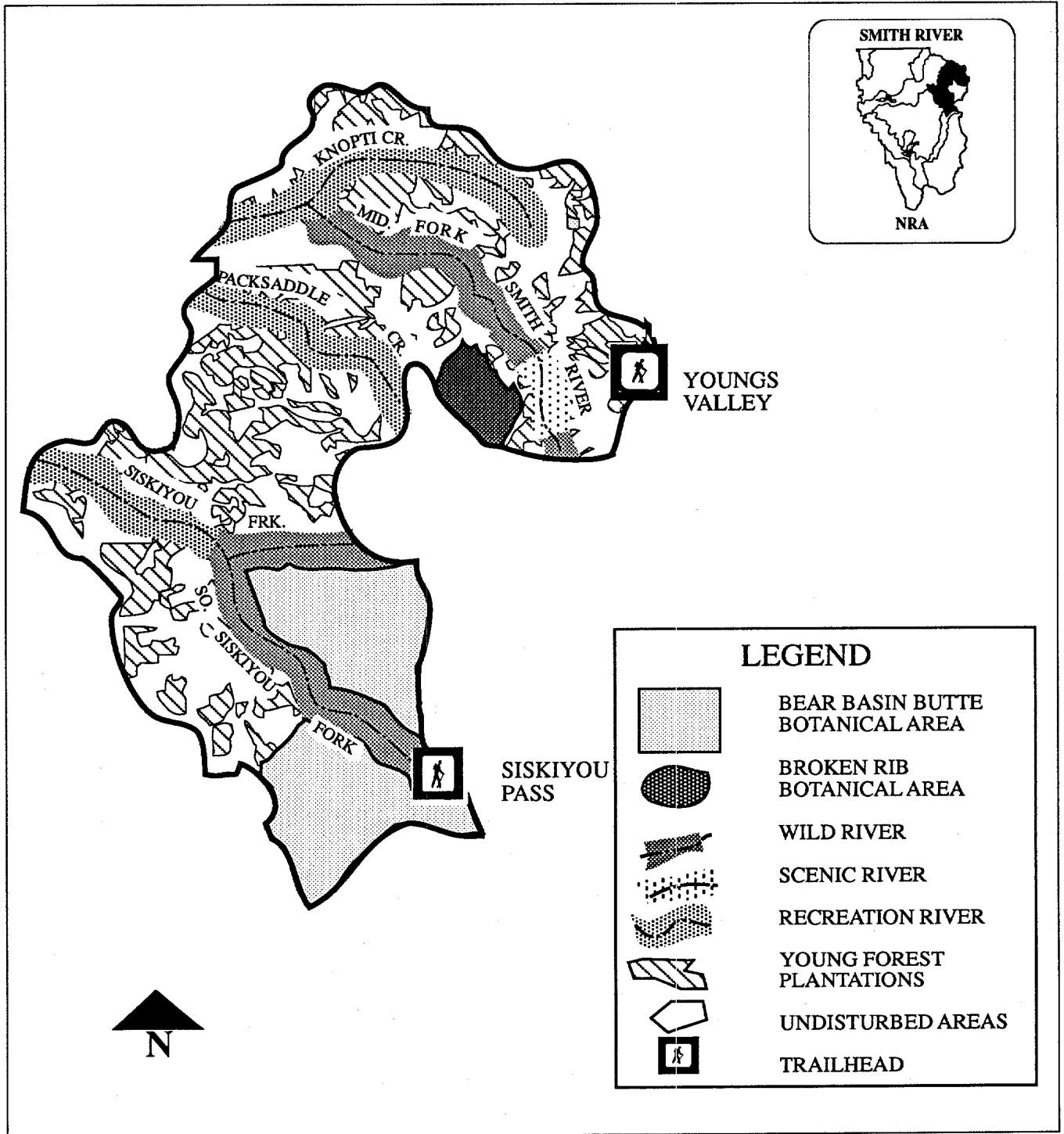
The Upper Middle Fork Management Area is characterized by productive forest soils, and a uniquely large diversity of tree species in two enriched conifer communities. Some of these conifers are near or at the limits of their ranges, resulting in many normally disjunct species being closely associated. Approximately 50% of the area outside river corridors and botanical areas is in timber plantations.

**Direction**

The NRA shall:

- a) Manage the landscape in an ecosystem approach to maintain and enhance the diverse values in the area such as old-growth forests, other special ecological communities, wildlife and fisheries habitat, aesthetics, and other forest products and uses.
- b) Timber harvesting will be permitted only in plantations, provided strategies are incorporated to reduce habitat fragmentation, and to employ silvicultural prescriptions designed to maintain or enhance biological diversity and wildlife habitats (such as retention of standing green trees, snags, and other coarse woody debris) by providing for a high level of structural and compositional diversity in managed stands.
- c) New roads will be minimally impacting in design and construction and will be obliterated when the specific use they were built for is completed.
- d) Provide opportunities for interpretive work and research and administrative studies in ecosystems and landscape ecology.

# Management Plan



*Smith River*  
National Recreation Area

**UPPER MIDDLE FORK  
Management Area #2**

## MIDDLE FORK/ Hwy 199 Management Area # 3

**Management Emphasis**  
*is on maintaining wildlife values and providing for a full range of recreation uses, with particular emphasis on the scenic and recreation values associated with the Smith River, old growth redwoods, and California State Highway 199.*

### Area Specific Management Direction

The National Scenic Byway (State Hwy 199) is the most heavily visited area anywhere in the NRA. The view from the Scenic Byway provides the bounds for identifying this management area. Fishing, boating, and swimming in the river; sight seeing and redwoods; and interpretive, camping and picnicking facilities are the primary attractions in the area.

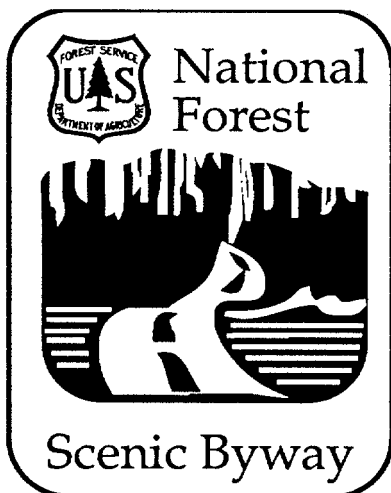
### Direction

The NRA shall:

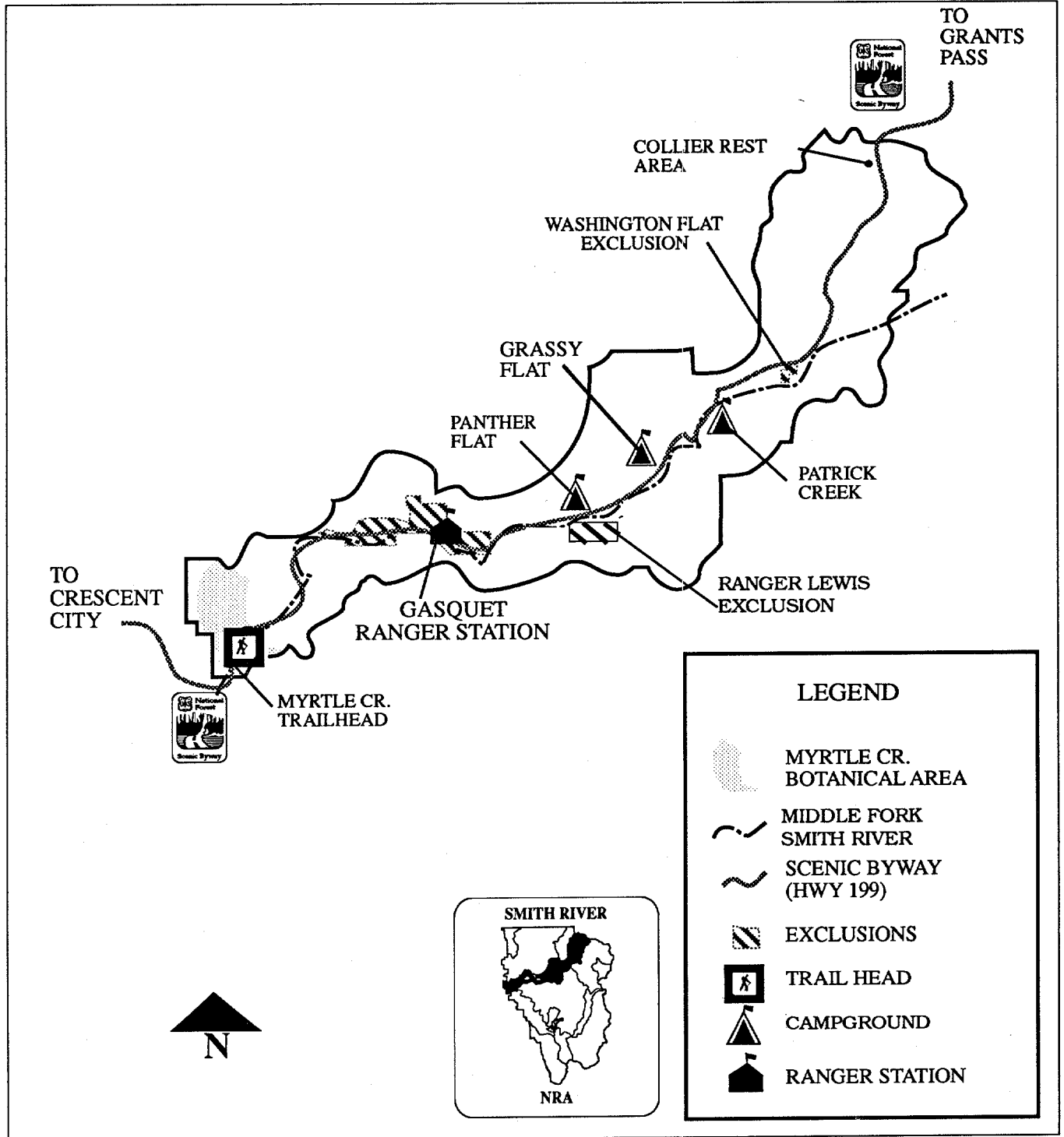
- a) Provide visitor services for the visiting public including: developed campgrounds, vista points, river access, river oriented day-use facilities, and natural and historical resource interpretation.
- b) Incorporate National Scenic Byway management direction when it is completed.
- c) Manage for wildlife and scenic values consistent with the objectives of the NRA.



*Sunny beaches and clear water of the Middle Fork.*



# Management Plan



*Smith River*  
National Recreation Area

MIDDLE FORK/Hwy 199  
Management Area #3

**UPPER  
SOUTH  
FORK  
Management  
Area # 4**

**Management Emphasis**  
*is on wild river and  
roadless backcountry  
recreation.*

**A Specific Management Direction**

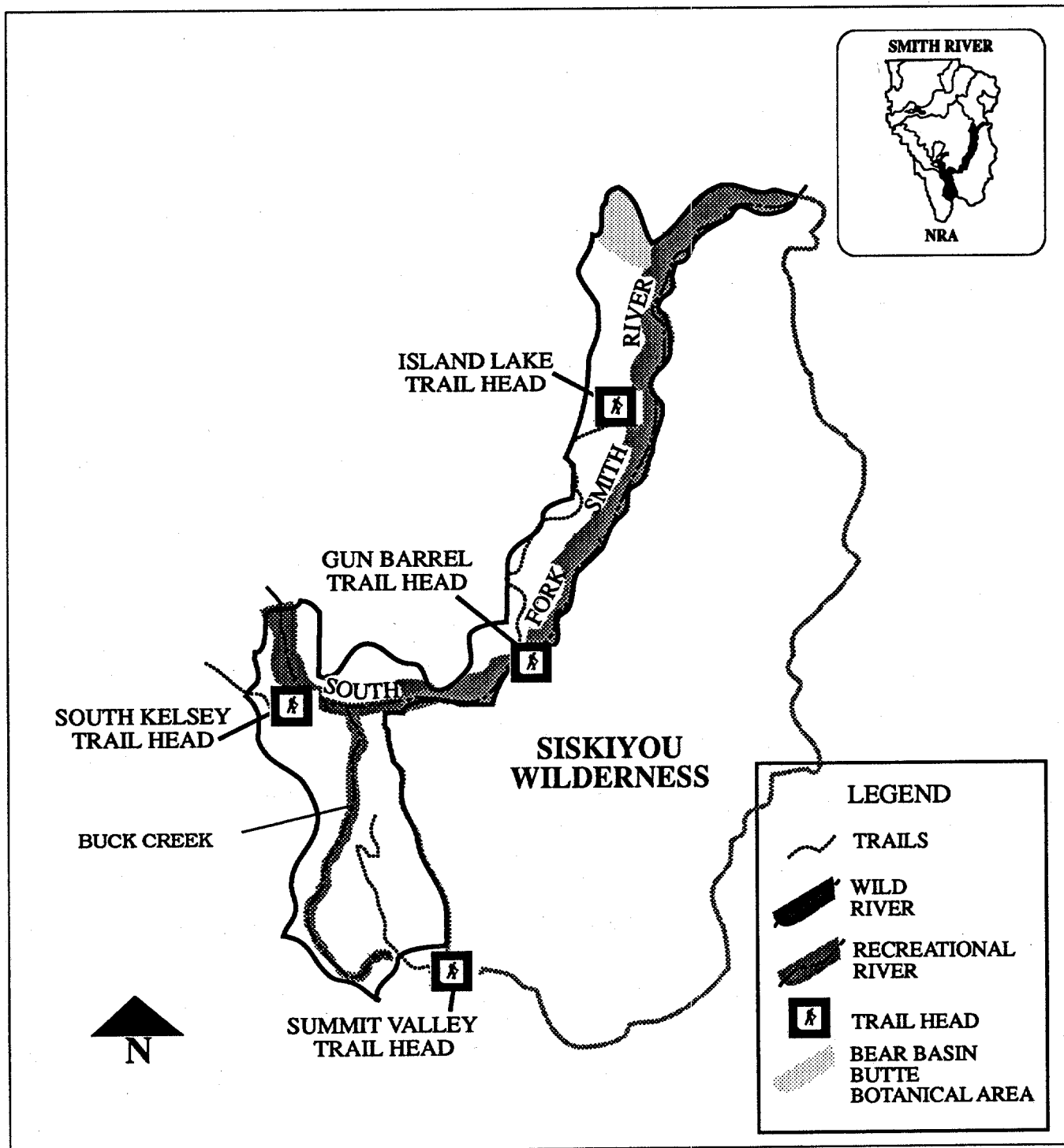
The upper section of the South Fork is designated as a "Wild River". It is largely this designation that identifies this management area. The river forms the western boundary of the Siskiyou Wilderness.

**Direction**

The NRA shall:

- a) Provide facilities consistent with the wild character of this management area for hiking, camping, fishing, and hunting.

# Management Plan



*Smith River*  
National Recreation Area

UPPER SOUTH FORK  
Management Area #4

## LOWER SOUTH FORK Management Area # 5

### Management

**Emphasis** is on maintaining and protecting natural scenic values in the river canyon while providing for traditional and compatible river sports. Timber harvests based on uneven-aged management with extended rotations shall be allowed where consistent with the protection of the scenic values of the recreation area.

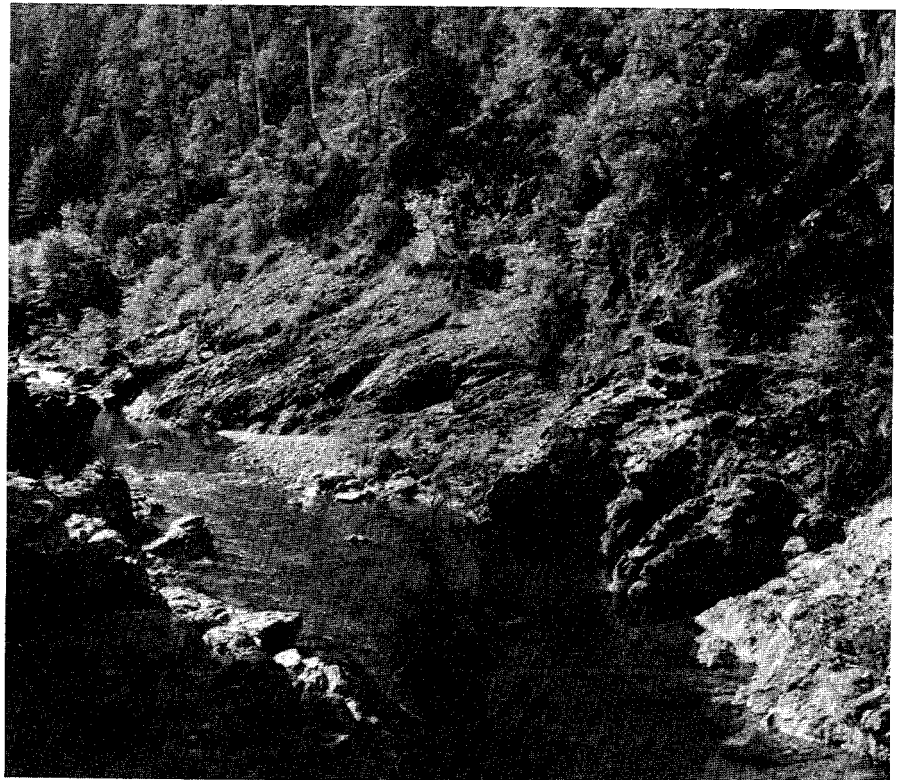
### Area Specific Management Direction

The Lower South Fork Management Area is defined by the river canyon. The river is paralleled by the South Fork Road, which provides access along this stretch of the river. The primary use of the area is whitewater boating activities, river-bank angling, sight-seeing, developed and dispersed camping associated with these activities, and limited timber production.

### Direction

The NRA shall:

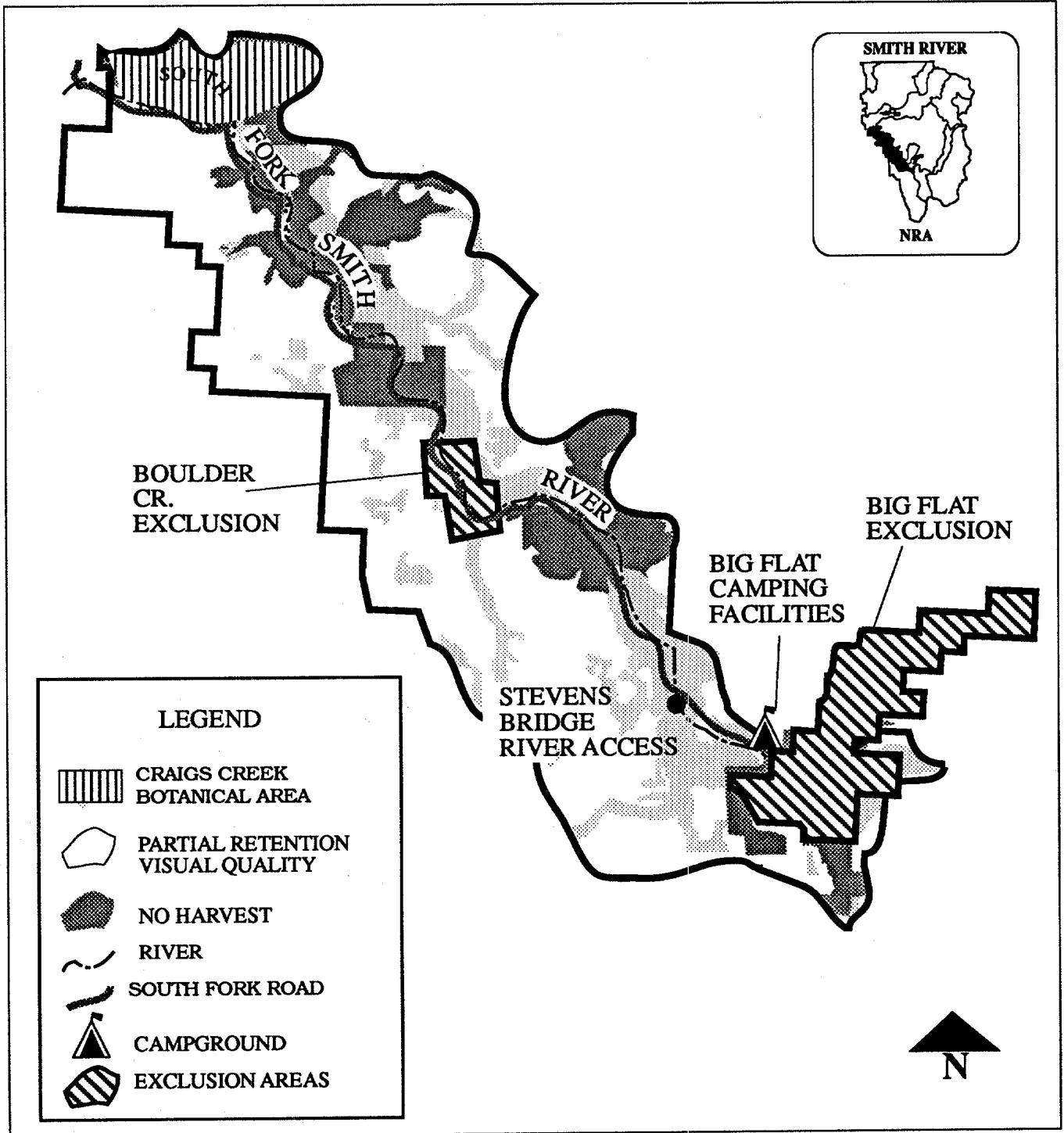
- a) Provide and maintain facilities for recreational, scenic and fisheries values including; vista points, staging areas, river oriented day-use facilities, boating, camping, hiking, and historical interpretation.
- b) Allow timber harvests based on uneven-aged management where consistent with the scenic values.
- c) Construct new roads required to meet the intent of timber harvesting and to take into consideration visual resources. Roads may be visible but will not dominate the view.



South Fork River as it flows through the Lower South Fork Area.



# Management Plan



**LEGEND**

- CRAIGS CREEK BOTANICAL AREA
- PARTIAL RETENTION VISUAL QUALITY
- NO HARVEST
- RIVER
- SOUTH FORK ROAD
- CAMPGROUND
- EXCLUSION AREAS

**LOWER  
HURDYGURDY  
CREEK  
Management  
Area # 6**

**Management  
Emphasis** is on  
*maintenance of  
wildlife values while  
providing rustic  
family and group  
recreation facilities  
for fishing,  
swimming, hunting,  
and camping. Timber  
harvests based on  
uneven-aged  
management with  
extended rotations  
shall be allowed  
where consistent  
with protection of  
scenic and wildlife  
values.*

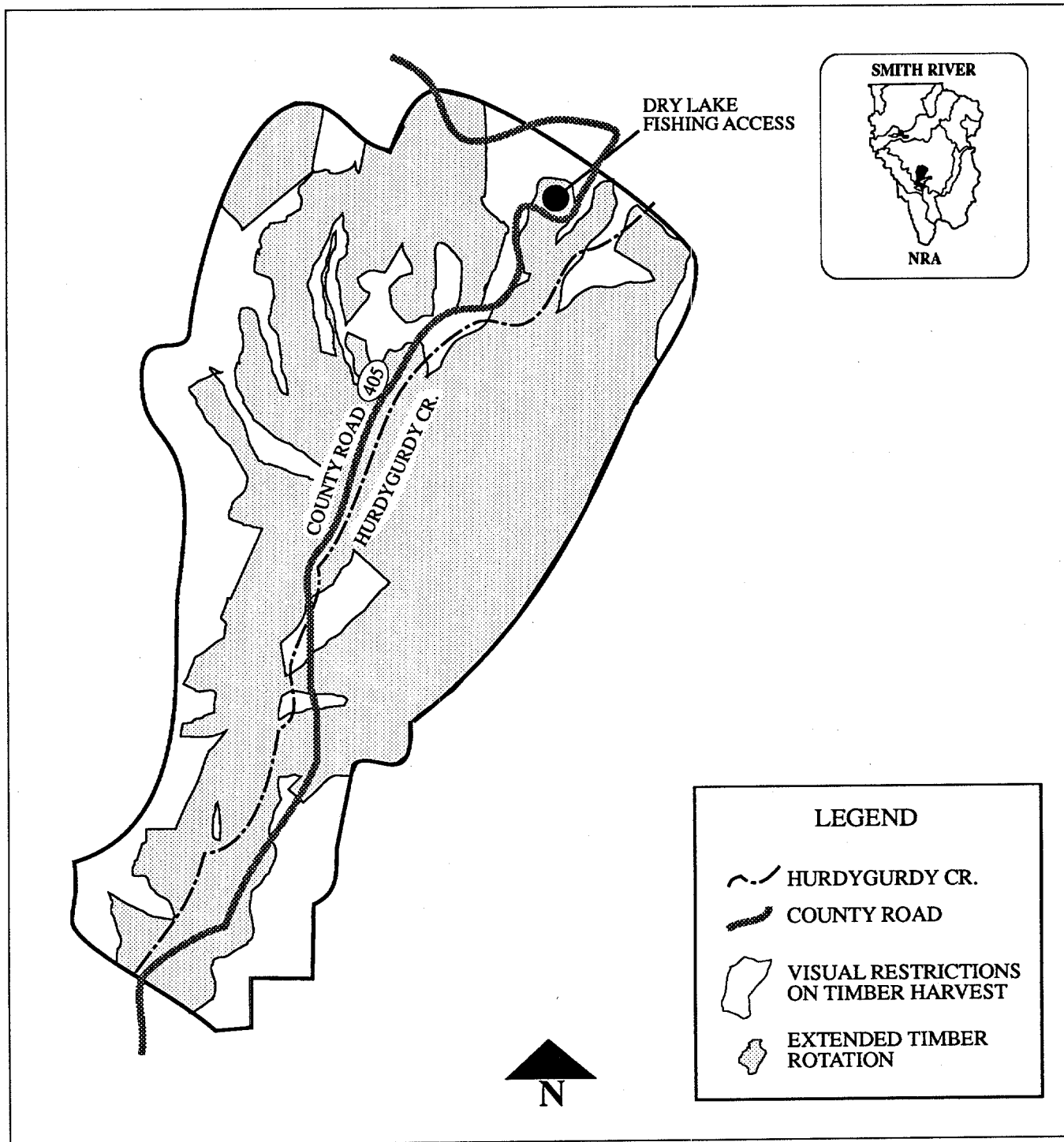
**Area Specific Management Direction**

The Lower Hurdygurdy Creek Management Area represents the only significant flat ground in Federal ownership along the entire South Fork River. As such, it provides the only sites available for large groups and multiple family camping facilities.

**Direction**

The NRA shall:

- a) Provide and maintain facilities for recreational, scenic and fisheries values including: vista points, staging areas, river oriented day-use facilities, camping, hiking, and historical interpretation.
- b) Allow timber harvests based on uneven-aged management where consistent with protection of scenic values and wildlife.
- c) Construct new roads to meet the intent of the management area. Roads necessary for the removal of the timber resources will be temporary and constructed to meet visual resource objectives, and so not dominate the view from recreation facilities.



**PRESCRIBED  
TIMBER  
Management  
Area # 7**

**Management  
Emphasis** is to  
*provide sustained  
yields of wood  
products while  
maintaining biological  
and ecological  
diversity.*

**Area Specific Management Direction**

This Prescribed Timber Management Area is predominantly productive timber land with little existing or potential for developed recreation. Dispersed recreation activities include: hunting and associated camping, firewood and Christmas tree cutting, and sight-seeing. Tributaries classified as recreational due to their anadromous fishery values extend into the area. These tributaries have 300 foot corridors on both sides of the creeks to protect the fishery. There are also identified wildlife habitat areas and biological corridors extending into the area.

**Direction**

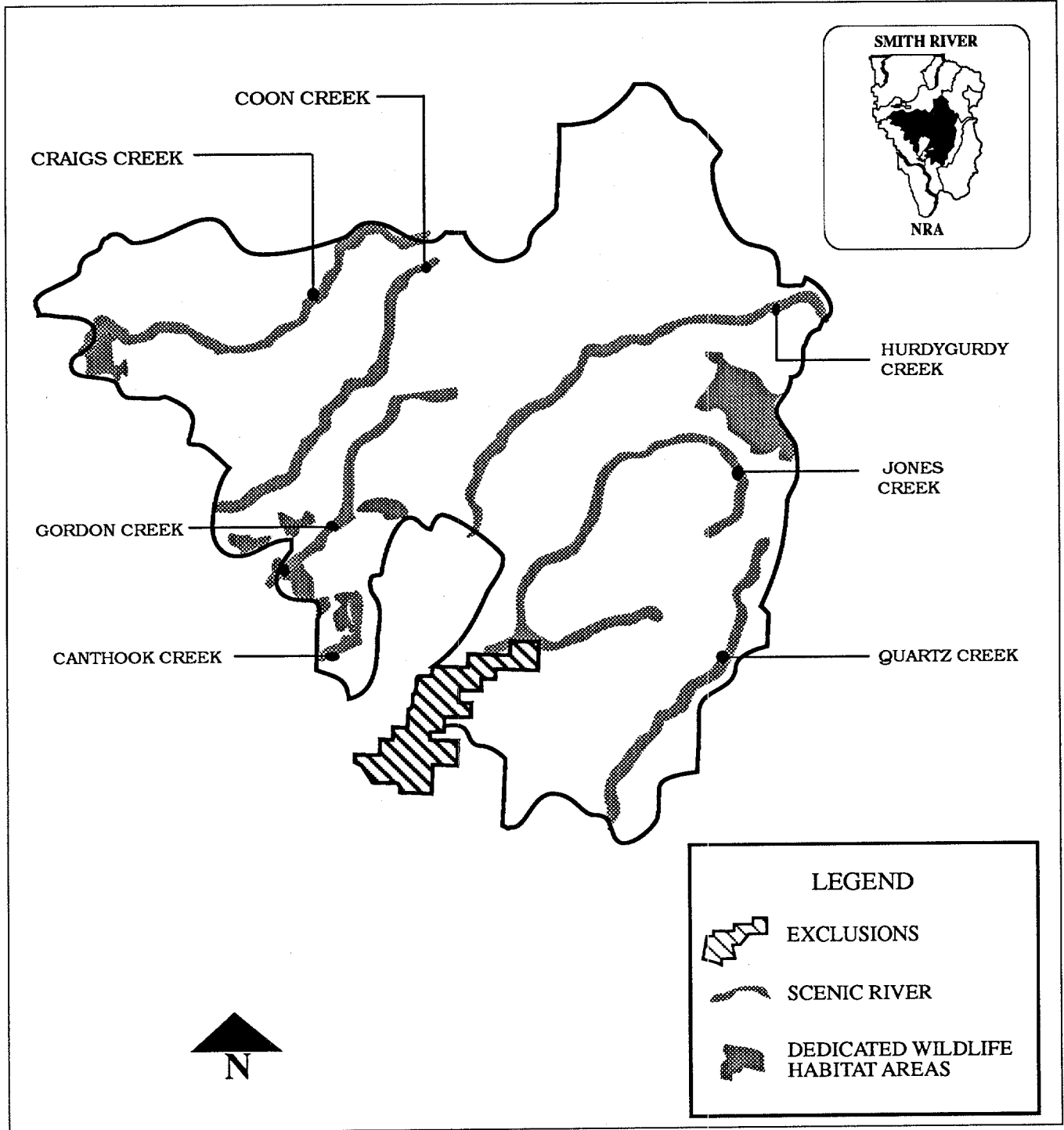
The NRA shall:

- a) Incorporate in timber management the use of strategies to reduce habitat fragmentation and employ silvicultural prescriptions designed to maintain or enhance biological diversity and wildlife habitats (such as retention of standing green trees, snags and other coarse woody debris) by providing for a high level of structural and compositional diversity in managed stands.



*Timber plantation.*

# Management Plan



*Smith River*  
National Recreation Area

**PRESCRIBED TIMBER  
Management Area #7**

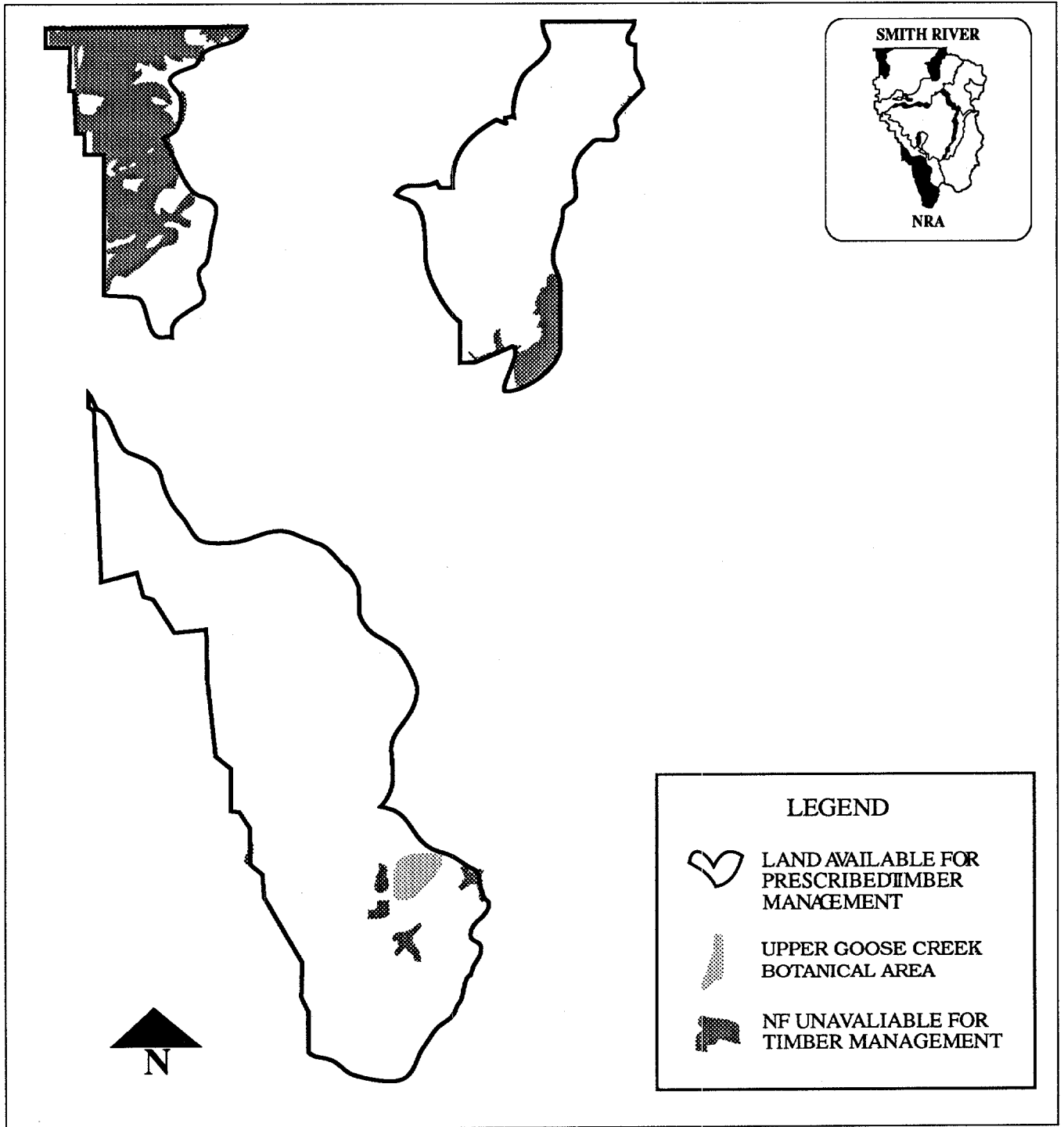
**PRESCRIBED  
TIMBER  
Management  
Area # 7**

**Area Specific Management Direction**

The NRA shall: (continued)

- b) Proceed with timber management using a full range of silvicultural activities and harvest methods, consistent with the Forest Standards and Guidelines or as superseded in the Final Forest Plan. Harvest levels will be consistent with a sustained yield objective.
  
- c) Utilize an uneven age, extended rotation management program for timber within the boundary of designated Recreation Rivers. Timber management shall be consistent with anadromous fish and wildlife values.
  
- d) Permit timber management in dedicated wildlife habitat areas only for the benefit of the protected species present.
  
- e) Construct new roads as required to meet the intent of the direction for this Management Area and safe dispersed recreation. Road construction shall be consistent with the Forest Standard and Guides as approved on August 17, 1986 or as superseded by the Forest Plan.
  
- f) Provide opportunities for public interpretation and research and administrative studies of ecosystems and landscape ecology.

# Management Plan



*Smith River*  
National Recreation Area

**PRESCRIBED TIMBER  
Management Area #7**

**SISKIYOU  
WILDERNESS  
Management  
Area # 8**

**Management**  
*shall be pursuant to the  
provisions of the  
Wilderness Act..*

**Area Specific Management Direction**

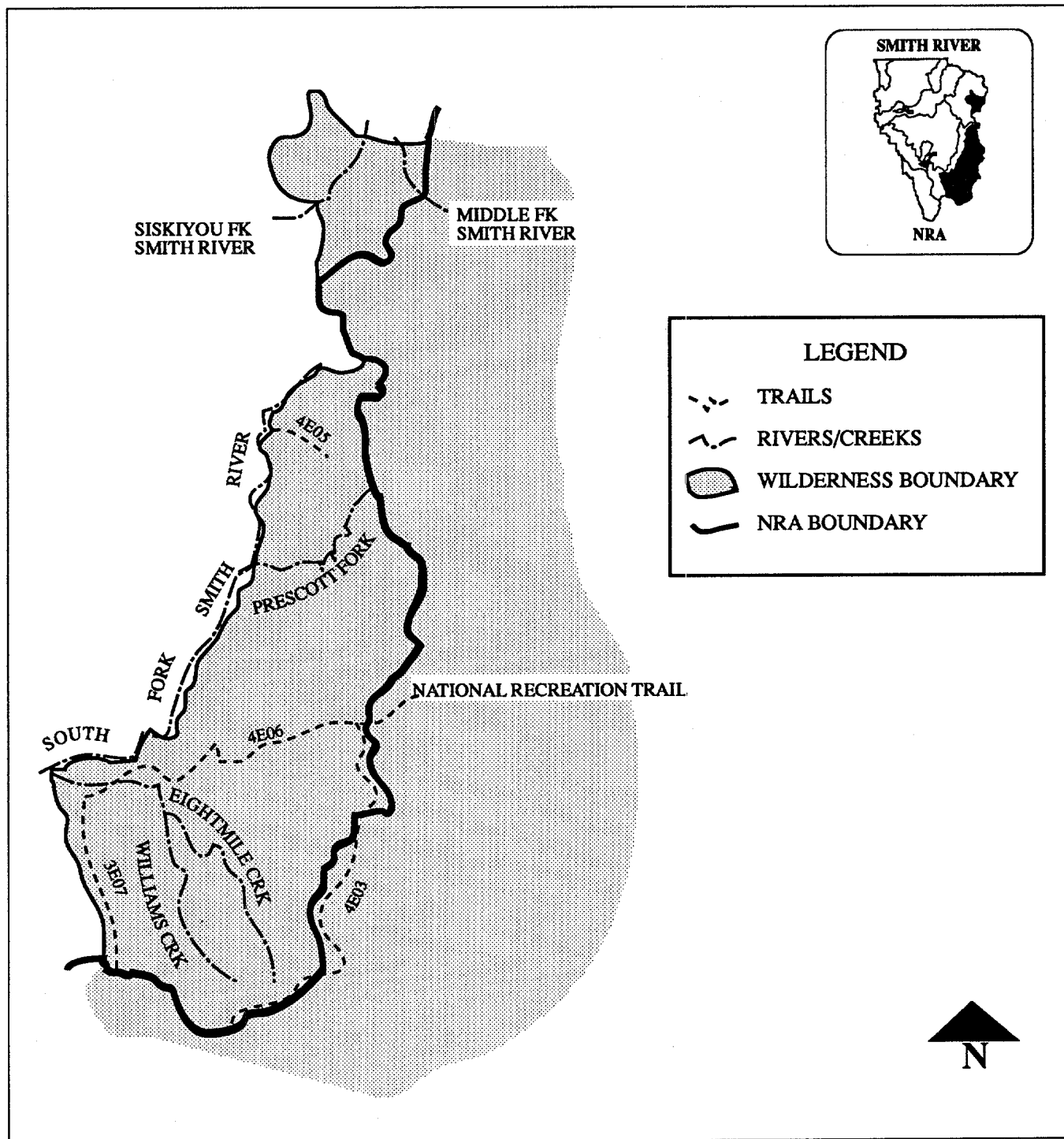
The Siskiyou Wilderness is an area designation that pre-dates the establishment of the NRA. While included within the boundary of the NRA, its management direction is established in law and is not modified by its inclusion.



*Twin Peaks on the border of the Siskiyou Wilderness.*



# Management Plan



*Smith River*  
National Recreation Area

**SISKIYOU WILDERNESS  
Management Area #8**

## RECREATION

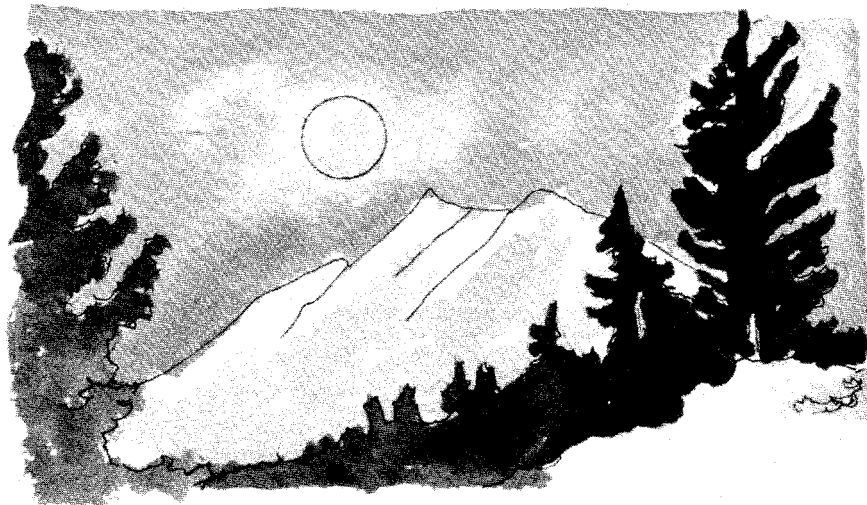
*The Recreation Action Schedule provides information and direction needed to achieve the desired future condition of the NRA as expressed in the Management Direction.*

*Although the activities are depicted as sequential, activities may be simultaneous or interactive.*

*Execution will be in response to the annual budget and National Environmental Policy Act requirements.*

### Recreation Plan and Improvements

- ➔ Improve campgrounds  
Upgrade Panther Flat, Patrick Creek, Cedar Rustic and Grassy Flat
- ➔ Establish day-use areas  
Redwood Flat, Myrtle Creek, Pappas Flat & various sites along Scenic Byway
- ➔ Provide boat access  
Forks river access, North Fork access & South Fork access
- ➔ Establish new trails  
Middle Fork River accesses, Cooper Flat, Myrtle Creek Falls, Hurdygurdy Creek interpretive trail, Siskiyou Backbone, Crest-to-Coast, Middle Fork Falls, & High Dome
- ➔ Reconstruct trails  
Myrtle Creek interpretive trail, Island Lake, Boundary trail, Buck Camp Ridge, & Monkey Ridge Overlook
- ➔ Develop trailheads  
Myrtle Creek, South Kelsey, Island Lake, Youngs Valley
- ➔ Develop horse trail  
Rock Creek to Bummer Lake
- ➔ Designate routes for OHV use and facilities



- ➔ Establish whitewater stream flow information phone line for recreational uses such as fishing and whitewater boating. This information would be updated daily during user seasons.
- ➔ Provide accessible facilities
  - Middle Fork Smith River trail access
  - Dry Lake accessible fishing platform
  - Interpretive trail for visually & hearing impaired
  - Campground, interpretive & day-use
- ➔ Develop education & interpretive services
  - Scenic Byway signing
  - Information facility at Forks River Access
  - Gasquet Ranger Station information center
  - Interpretive site on Patrick Creek for fisheries
  - Habitat restoration
  - Slant Bridge information sign
  - Collier Rest Area
- ➔ Establish Cooperative Agreements with:
  - Del Norte County Supervisors & Advisory Board
  - Del Norte Chamber of Commerce
  - State and Federal Parks
  - California Department of Fish and Game
  - Cal Trans
  - Pelican Bay Employee Association
  - California Department of Boating & Waterways
  - Smith River Alliance
  - Horse Clubs
  - OHV Clubs
  - Hiking Clubs
  - Fishing Organizations
  - Boating Organizations
  - Adjacent landowners

## RECREATION



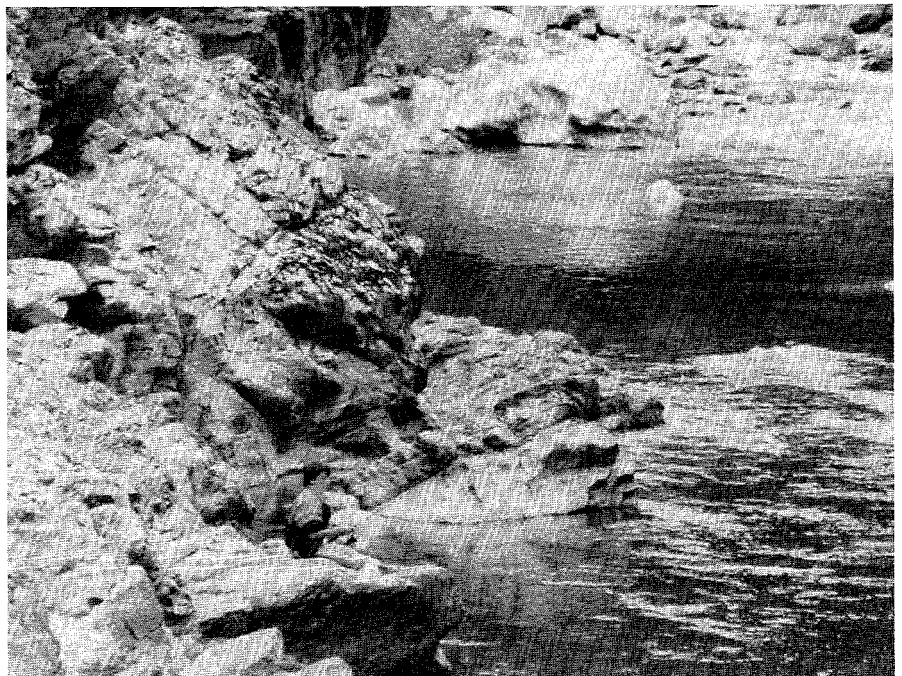
### FISHERIES

*The Smith River NRA includes one of the best salmon and steelhead fisheries on the west coast.*

#### Fisheries and Riparian Plan

All fisheries and riparian work will be coordinated to:

- ➔ Meet goals of watershed and wildlife management programs and,
- ➔ Restore and maintain designated streamside protection zones of classified river corridors.
- ➔ Maintain the function of corridors and manage for watershed-stream integrity by correcting road and culvert failures, controlling landslides and fine sediment sources, and maintaining sources of large woody debris for channel stability and stream habitat complexity.
- ➔ Improve stream habitat conditions by increasing the abundance and effective distribution of important instream habitat forming elements (largely woody debris and boulders) through the enhancement of natural recruitment processes and by direct placement.



*Fishing on the Middle Fork of the Smith River.*

## Improvements and Activities

- ➔ Development of a stream habitat management approach based on a watershed perspective, that incorporates:  
An effective anadromous and native resident cutthroat and rainbow trout management program

Monitoring results and findings along with research into fish-habitat relationships (FHR)

State-of-the-art cost effective stream habitat improvement

- ➔ Coordinate recreational fisheries and stream ecology seminars with:

Redwood National Park  
neighboring State Parks  
Humboldt State University  
sport fishing organizations  
Sea Grant marine advisor

- ➔ Develop the following monitoring activities:  
Biological and physical responses to instream habitat improvement efforts

Summer steelhead and spring chinook salmon distribution and habitat conditions

Fish and amphibian habitat use and water quality in streams and lakes

- ➔ Establish the following Fish Habitat Relationships (FHR) Program goals:  
Develop standards for stream habitat inventory, sampling, and classification

Develop goals of desired future conditions based on stream biodiversity to successfully manage and protect all stream life; game and non-game species

Verify and refine fish-habitat relationships models for juvenile salmonids

Establish baseline information on water quality, food organisms, and critical fish habitat.

## FISHERIES

*A primary goal is to maintain and enhance an effective anadromous and natural trout management program.*

## SOIL AND WATERSHED

*For the purposes of the preservation and protection of the Smith River watershed's outstanding Wild & Scenic rivers and associated beneficial uses, a monitoring program will be implemented to evaluate the effect of multi-use management activities on the water .*

### Soil and Watershed Improvements and Activities

- ➔ Conduct road inventory, evaluation, and reclamation:
  - Conduct a comprehensive inventory of all roads within the NRA
  - Evaluate each road with regard to use or potential use for recreation, timber management, access to private land, and for the road system's effects on watershed, wildlife, and recreational values
  - Determine long-term management of each road. Develop a schedule for closure and reclamation of unneeded or inappropriate roads
- ➔ Monitor soil and water resources. Such monitoring efforts will include the following activities:
  - Monitor impact of timber management activities on Jones, Hurdygurdy and Craig's creek watersheds, all of which have historical precipitation, runoff and sediment data from the Fox Unit Monitoring Program
  - Monitor impact of OHV on water quality in the North Fork of the Smith River
  - Monitor and evaluate the water quality of the abandoned mines in the North & South Fork drainages
  - Continue to monitor landslides after large flood producing storms of a return period of 5 years or greater
  - Continue soil erosion monitoring on clearcut and broadcast burned areas
  - Continue BMP implementation and effectiveness monitoring
  - Continue the cooperative air quality and precipitation chemistry monitoring in conjunction with the California Air Resources Board and the Desert Research Institute
- ➔ Evaluate flood-risk:
  - Conduct a flood-risk rating of all road drainage structures
  - Develop a plan for "floodproofing" all roads

➔ Land reclamation:

Reclaim sites that are derelict or degraded, due to mineral exploration, through extensive soil and revegetation techniques. Potential sites for restoration include Cal-Nickel on Gasquet Mountain, Holiday Mine, Tyson Mine (MOU needed), Alta Mine (MOU needed), Union Mine, and Copper Creek Mine

Stabilize landslides and restore damaged riparian areas by continuing treatments of unstable areas, including channel modifications, protection at landslide toes, and revegetation of landslide surfaces on ongoing and future sites of Rattlesnake Slide, Slip n' Slide (MOU needed), Dry Lake, Big Toe, and Rib Slide.

➔ Develop education and interpretation programs:

Develop information/education packets and seminars for describing watershed management and recreational whitewater opportunities for elementary schools, Chamber of Commerce, interpretive sites, and Humboldt State University

## SOIL AND WATERSHED

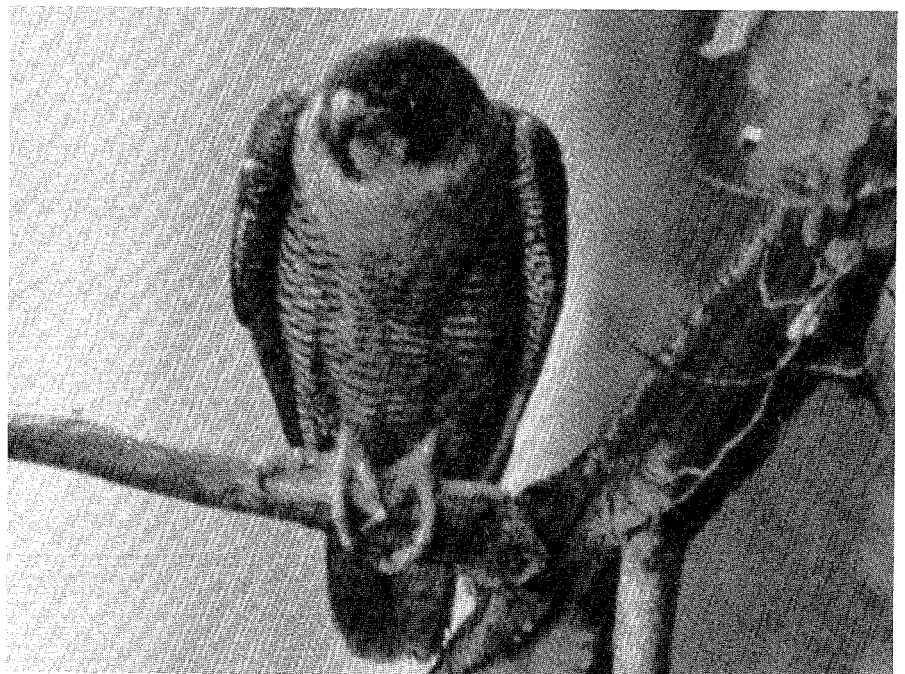
### WILDLIFE

*The goal of habitat restoration and improvement is to enhance the abundance and diversity of wildlife species occurring in the NRA.*

#### Wildlife Habitat Improvement & Activities

The goal of habitat restoration and improvement is to enhance the abundance and diversity of wildlife species occurring in the NRA. This is important for the health of the ecosystem and for the enjoyment of forest visitors.

- ◆ Design & implement habitat improvement projects to restore habitat quality, reduce the potential for habitat degradation, and improve habitat quality:
  - Construction or rehabilitation of nest/den sites of threatened, endangered, & sensitive species
  - Rattlesnake Lake habitat restoration & wildlife interpretive station
  - Brush reduction in travel & browse corridors
  - Meadow restoration & enhancement
  - Seasonal road management in sensitive wildlife areas
  - Planting/seeding wildlife browse plants in disturbed areas
  - Restoration & enhancement of springs/waterholes



*Peregrin Falcons are found on the Smith River NRA.*



- ➔ Identify areas and projects where timber management could be used to improve the quality of wildlife habitat:
  - Thinning of over-stocked areas for quicker maturation of stand & increased usability for wildlife
- ➔ Reestablish wildlife populations such as elk and the peregrine falcon as an integral part of the ecosystem, and enhance opportunities for visitors to view wildlife
- ➔ Develop the following programs to meet research and monitoring goals:
  - Monitor management indicator species to establish baseline information on population sizes, habitat requirements, and relative vulnerability to disturbance from recreation and management activities
  - Monitor threatened, endangered, and sensitive species
  - Monitor the success of silvicultural prescriptions, post-harvest treatments, and habitat improvement projects

## WILDLIFE

### Cultural Resources Improvement and Activities

- ➔ Establish interpretive sites that highlight:
  - Historic and prehistoric overview of the Smith River National Recreation Area, Myrtle Creek Mining District, Hurdygurdy Mining District, Patrick Creek Campground (CCC), Gasquet Ranger Station (CCC) and Native American use along river corridor
- ➔ Research:
  - Identify Native American villages along the Smith River corridor

## CULTURAL RESOURCES

**TIMBER****Timber Plan Improvements and Activities**

- ➔ **Timber harvesting:**  
Harvest 2-4 million board feet of conifers per year utilizing strategies and prescriptions designed to maintain or enhance biological diversity and wildlife habitats
- ➔ **Fuelwood:**  
Provide between 1000 and 1500 cords for public use per year
- ➔ **Reforestation:**  
Site preparation, planting, and/or release for survival on approximately 500 acres per year
- ➔ **Release for growth:**  
Release desired species from competing vegetation on approximately 300 acres per year
- ➔ **Precommercial thinning**  
Thin to control stocking of desired species on approximately 200 acres per year
- ➔ **Timber stand improvement**  
Conduct timber stand improvement activities such as pruning, fertilizing, and hardwood control on approximately 150 acres per year
- ➔ **Prescriptions:**  
Prepare vegetation management prescriptions for approximately 700-1000 acres per year for timber harvesting, reforestation, timber stand improvement, and vegetation management activities associated with other resource needs
- ➔ **Education and Interpretation programs:**  
Coordinate and develop educational/interpretive activities and displays to demonstrate the philosophies of New Perspectives, New Forestry, and ecological and biological diversity
- ➔ **Cooperation and Research:**  
Cooperate with the Pacific Southwest Forest and Range Experiment Station and other national forests to develop landscape level strategies and management models designed to implement the philosophies of New Perspectives, and stewardship first to enhance and preserve biological and ecological diversity.

- ➔ Cooperate with educational institutions for the purpose of demonstrating the philosophies of New Perspectives, New Forestry and ecological and biological diversity
- ➔ Continue to manage progeny test sites as part of the Regional tree improvement program
- ➔ Establish a study of existing plantations within the area to determine realistic growth-and-yield predictions and establish management and predictive models
- ➔ Establish cooperative programs with other organizations (federal, state, local, private) to investigate such things as: root disease, harsh site management, and thinning regimes

## TIMBER

## FIRE AND FUELS

### Fire and Fuels Management Plan

- ➔ **Prevention:**
  - Reduce human-caused fires:
    - Maintain efforts to reduce human-caused fires by community and public service campaigns, industrial and residential inspections, issuance and enforcement of debris burning permits
  
- ➔ **Presuppression:**
  - Conduct hazard reduction projects in residential and heavy recreational use areas:
    - Construct and maintain a system of strategic control lines around residential concentrations. Areas currently identified are those portions of National Forest land adjacent to homes above North Fork Road in Gasquet, the Ranger Lewis Tract on Pioneer Road, Siskiyou Fork Road where it intersects with Highway 199, and surrounding the sanitation transfer station on County Road 314
    - Maintain hand firelines around the most frequently used roadside turnouts on Highway 199
    - Construct and maintain a shaded fuelbreak beyond the perimeter of the Collier Tunnel Rest Area
  
- ➔ **Suppression:**
  - Provide prompt suppression of fires and cooperate in the response to other emergencies within the National Recreation Area
    - Perform suppression-related rehabilitation
    - Establish a suppression plan for the Scenic Byway
    - Cooperate with the Klamath and Siskiyou National Forests in the development of a suppression plan for the Siskiyou Wilderness
  
- ➔ **Cooperation:**
  - Maintain cooperation with other National Forests, California Department of Forestry and Fire Protection, Redwood National Park, and the Inter-agency Emergency Command Center in Fortuna

- ➔ Fuels management:
  - Maintain timber harvest-produced fuels at an acceptable level
  - Reduce/eliminate reliance on burning for fuels reduction and site preparation
  - Seek funding to undertake a natural fuels reduction program

## **FIRE AND FUELS**

*There is evidence of infrequent, but reoccurring, large fires.*



*Back firing on wildfire.*

### Classified River Corridors

River/Tributary Segment	Description	Classification	River Corridor Width Width From Each Bank		
			1/4 mi.	1/8 mi.	300 Ft.
<b>Main Stem Smith</b>					
Main Stem	Confluence of the Middle & South Fork to the NRA Boundary	Recreational	X		
Rowdy Creek	CA./OR. Border to NRA Boundary	Recreational			X
<b>Middle Fork Smith</b>					
Middle Fork	Headwaters 3 miles S. of Sanger Lake to Center Sec. 7, T.17N., R.5E.	Wild	X		
Middle Fork	Center Sec. 7, T. 17N., R.5E. to Center Sec. 6, T.17N, R.5E.	Scenic	X		
Middle Fork	Center Sec. 6, T. 17N., R. 5E. to 1/2 mile upstream from its confluence with Knopki Creek	Wild	X		
Middle Fork	1/2 mile upstream from its confluence with Knopki Cr. to its confluence with the S. Fork Smith River	Recreational	X		
Myrtle Creek	Headwaters to Sec. 9, T.17N., R. 1E. to middle Sec. 28, T.17N., R. 1E.	Scenic	X		
Myrtle Creek	Middle of Sec. 28, T.17N., R. 1E. to confluence with M. Fork Smith River	Wild	X		
Shelly Creek	Headwaters in Sec. 1, T.18N., R3E., to its confluence with Patrick Cr.	Recreational			X
Kelly Creek	Headwaters in Sec. 32, T.17N., R.3E., to its confluence with the M. Fork Smith River	Scenic	X		
Packsaddle Creek	Headwaters 0.8 mile S.W. of Broken Rib Mtn. to its confluence with M. Fork Smith River	Scenic	X		
E. Fork Patrick Creek	Headwaters in Sec. 10, T.18N., R3E., to its confluence with the W. Fork of Patrick Creek	Recreational			X

# Management Plan

## Classified River Corridors

River/Tributary Segment	Description	Classification	River Corridor Width Width From Each Bank		
			1/4 mi.	1/8 mi.	300 Ft.
W. Fork Patrick Creek	Headwaters in Sec. 18, T.18N., R.3E., to its confluence with the E. Fork of the Patrick Creek	Recreational			X
Little Jones Creek	Headwaters in Sec. 34, T.17N., R.3E., to its confluence with the M. Fork Smith River	Recreational			X
Griffin Creek	Headwaters 0.2 miles S.W. of Hazel View Summit to its confluence with the M. Fork Smith River	Recreational	X		
Knopki Creek	Headwaters 0.4 miles west of Sanger Peak to its confluence with the M. Fork Smith River	Recreational	X		
Monkey Creek	Headwaters in the N.E. quadrant of Sec. 12, T.18N., R.3E., to its confluence with the M. Fork Smith River	Recreational			X
Patrick Creek	Junction of East & West Forks of Patrick Creek to its confluence with the M. Fork Smith River	Recreational			X
Hardscrabble Creek	Headwaters in the N.E. quarter Sec. 2, T.17N., R.1E., to its confluence with the M. Fork Smith River	Recreational			X
<b>North Fork Smith River</b>					
N. Fork	North Fork segment from the CA./OR. border to its confluence with an unnamed tributary in the N.E. quarter of Sec. 5., T.18N., R.2E.	Wild			X
North Fork	Segment from the confluence of an unnamed tributary in the N.E. quarter of Sec. 5, T.18N., R.2E., to its southern-most intersection with the eastern section line of sec. 5, T.18N., R.2E.	Scenic			X

### Classified River Corridors

River/Tributary Segment	Description	Classification	River Corridor Width Width From Each Bank		
			1/4 mi.	1/8 mi.	300 Ft.
North Fork	Segment from its southernmost intersection with the eastern section line of sec. 5, T.18N., R.2E., to its confluence with Stony Creek	Wild		X	
North Fork	Segment from its confluence with Stony Creek to its confluence with the M. Fork Smith River	Recreational		X	
Diamond Creek	C A./Or. Border to its confluence with Bear Creek	Recreational		X	
Diamond Creek	Confluence with Bear Creek to its confluence with the N. Fork Smith River	Scenic		X	
Bear Creek	Headwaters in Sec. 24, T.18N., R.2E., to its confluence with the N. Fork Smith River	Scenic		X	
Still Creek	Headwaters in Sec. 11, T.18N., R.1E., to its confluence with the N. Fork Smith River	Scenic		X	
N. Fork Diamond Creek	CA./OR. Border to its confluence with Diamond Creek	Recreational		X	
High Plateau Cr.	Headwaters in Sec. 26, T.18N., R.2E., to its confluence with Diamond Cr.	Scenic		X	
Stony Creek	Headwaters in Sec 25, T.18N., R2E., to its confluence with the N. Fork Smith River	Scenic		X	
Peridotite Creek	Headwaters in Sec. 34, T.18N., R2E., to its confluence with the N. Fork Smith River	Wild		X	
<b>Siskiyou Fork Smith River</b>					
Siskiyou Fork	Headwaters 0.7 miles S.E. of Broken Rib Mtn. to its confluence with the N. Fork Smith River	Wild		X	



# Management Plan

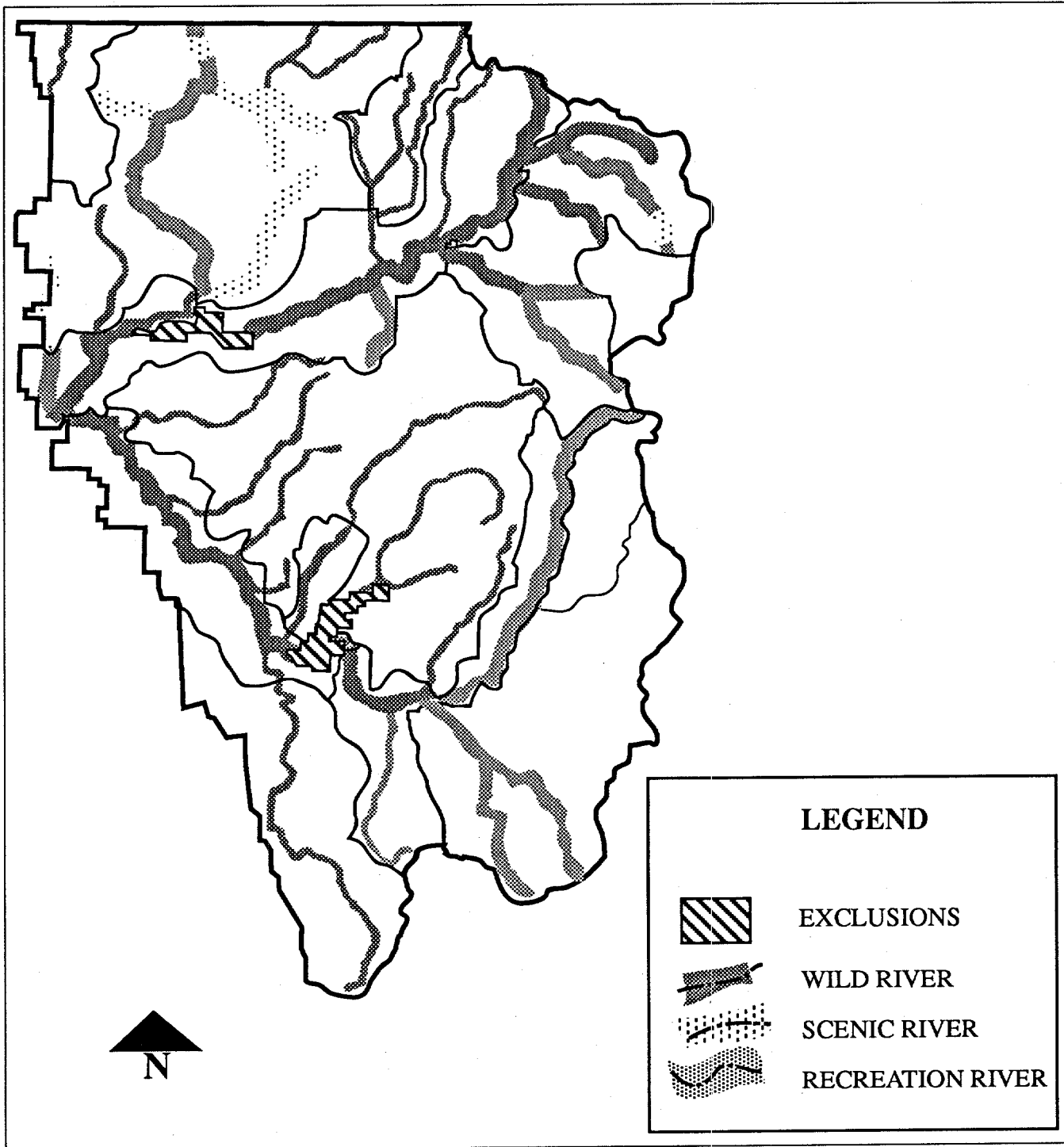
## Classified River Corridors

River/Tributary Segment	Description	Classification	River Corridor Width Width From Each Bank		
			1/4 mi.	1/8 mi.	300 Ft.
Siskiyou Fork	Confluence with the South Siskiyou Fork Smith River to its confluence with the M. Fork Smith River	Recreational	X		
South Siskiyou Fork	Headwaters 0.6 miles S.W. of Buck Lake to its confluence with the Siskiyou Fork Smith River	Wild	X		
<b>South Fork Smith River</b> South Fork	Headwaters 0.5 miles S.W. of Bear Mtn. to Blackhawk Bar	Wild	X		
South Fork	Blackhawk Bar to its confluence with the main stem of the Smith River	Recreational	X		
Williams Creek	Headwaters in Sec. 31, T.14N., R.4E., to its confluence w/ Eightmile Cr.	Wild	X		
Eightmile Creek	Headwaters in Sec. 29, T.14N., R.4E., to its confluence with the S. Fork Smith River	Wild	X		
Harrington Creek	From its source to its confluence with the S. Fork Smith River	Wild	X		
Prescott Fork of the Smith River	Headwaters 0.5 miles S.E. of Island Lake to its confluence with the S. Fork Smith River	Wild	X		
Quartz Creek	Headwaters in Sec. 31, T.16N., R.4E., to its confluence with the S. Fork Smith River	Recreational			X
Jones Creek	Headwaters in Sec. 36, T.16N., R.3E., to its confluence with the S. Fork Smith River	Recreational			X
Upper Hurdygurdy Creek	Headwaters 0.4 miles S.W. of Bear Basin Butte to Dry Lake	Recreational			X

### Classified River Corridors

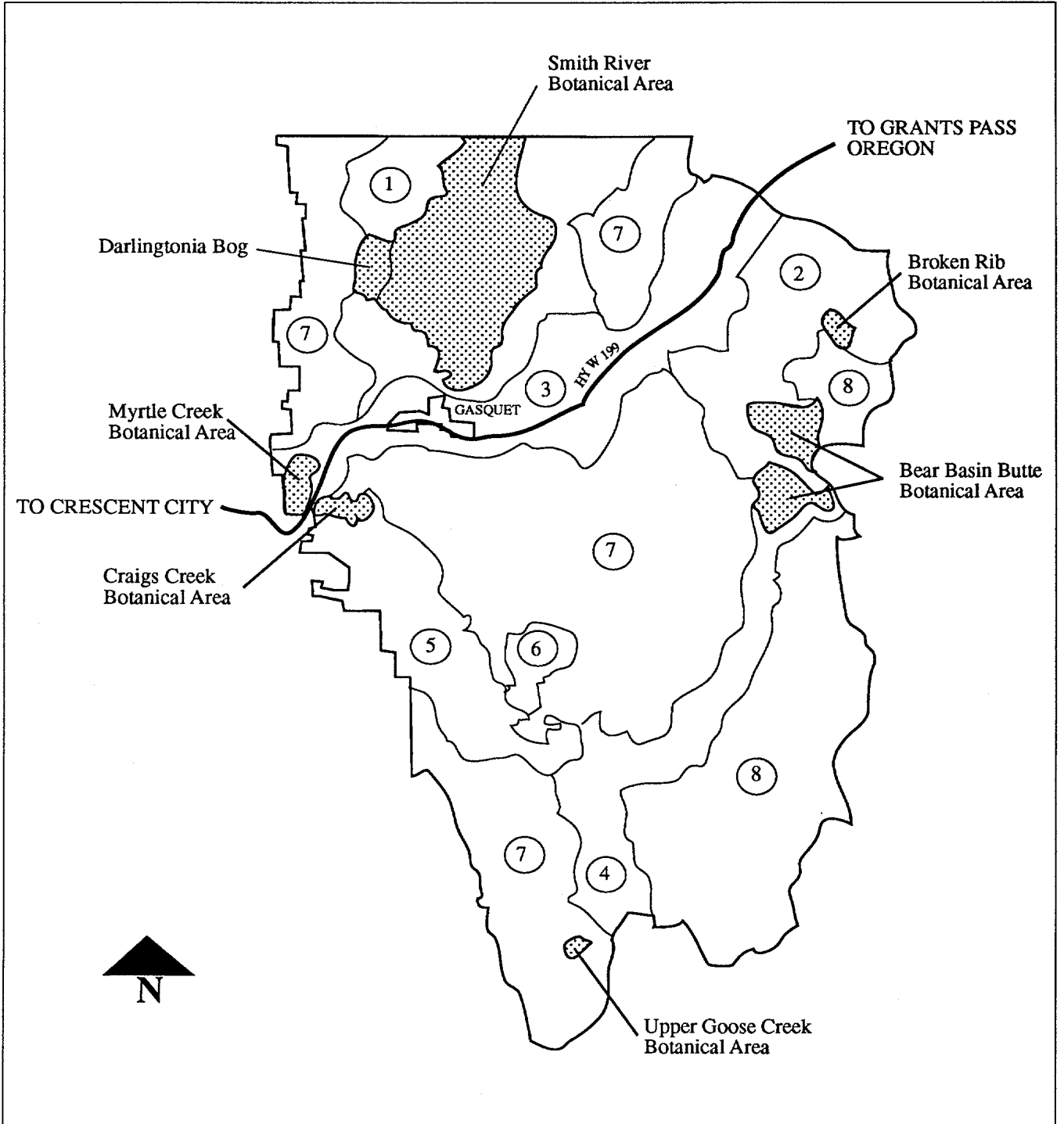
River/Tributary Segment	Description	Classification	River Corridor Width Width From Each Bank		
			1/4 mi.	1/8 mi.	300 Ft.
Lower Hurdygurdy Creek	Dry Lake to its confluence with the S. Fork Smith River	Recreational		X	
Gordon Creek	Headwaters in Sec. 18, T.16N., R.3E., to its confluence with the S. Fork Smith River	Recreational			X
Coon Creek	Junction of its two headwaters tributaries in the S.E. quadrant of Sec. 31, T.17N., R.3E., to its confluence with the S. Fork Smith River	Recreational			X
Craigs Creek	Headwaters in Sec. 36, T.17N., R.2E., to its confluence with the S. Fork Smith River	Recreational			X
Goose Creek	Headwaters in Sec. 13, T.13N., R.2E., to its confluence with the S. Fork Smith River	Recreational			X
East Fork Goose Cr.	Headwaters in Sec. 18, T.13N., R.3E., to its confluence w/ Goose Creek	Recreational			X
Buck Creek	Headwaters at Cedar Camp Spring to the N.E. corner of Sec. 8, T.14N., R.3E.	Scenic	X		
Buck Creek	N.E. Corner Sec. 8, T.14N., R.3E., to its confluence w/the S.Fork Smith River	Wild	X		
Muzzleloader Cr.	Headwaters in Sec. 2, T.15N.,R.3E., to its confluence w/Jones Creek	Recreational			X
Canthook Creek	Headwaters in Sec 2, T.15N.,R.2E., to its confluence w/ South Fork Smith River	Recreational			X
Rock Creek	National Forest Boundary in Sec. 6, T.15N., R.2E., to its confluence w/S. Fork	Recreational			X
Blackhawk Creek	Headwaters in Sec. 21, T.15N.,R.2E., to its confluence w/S. Fork.	Recreational			X

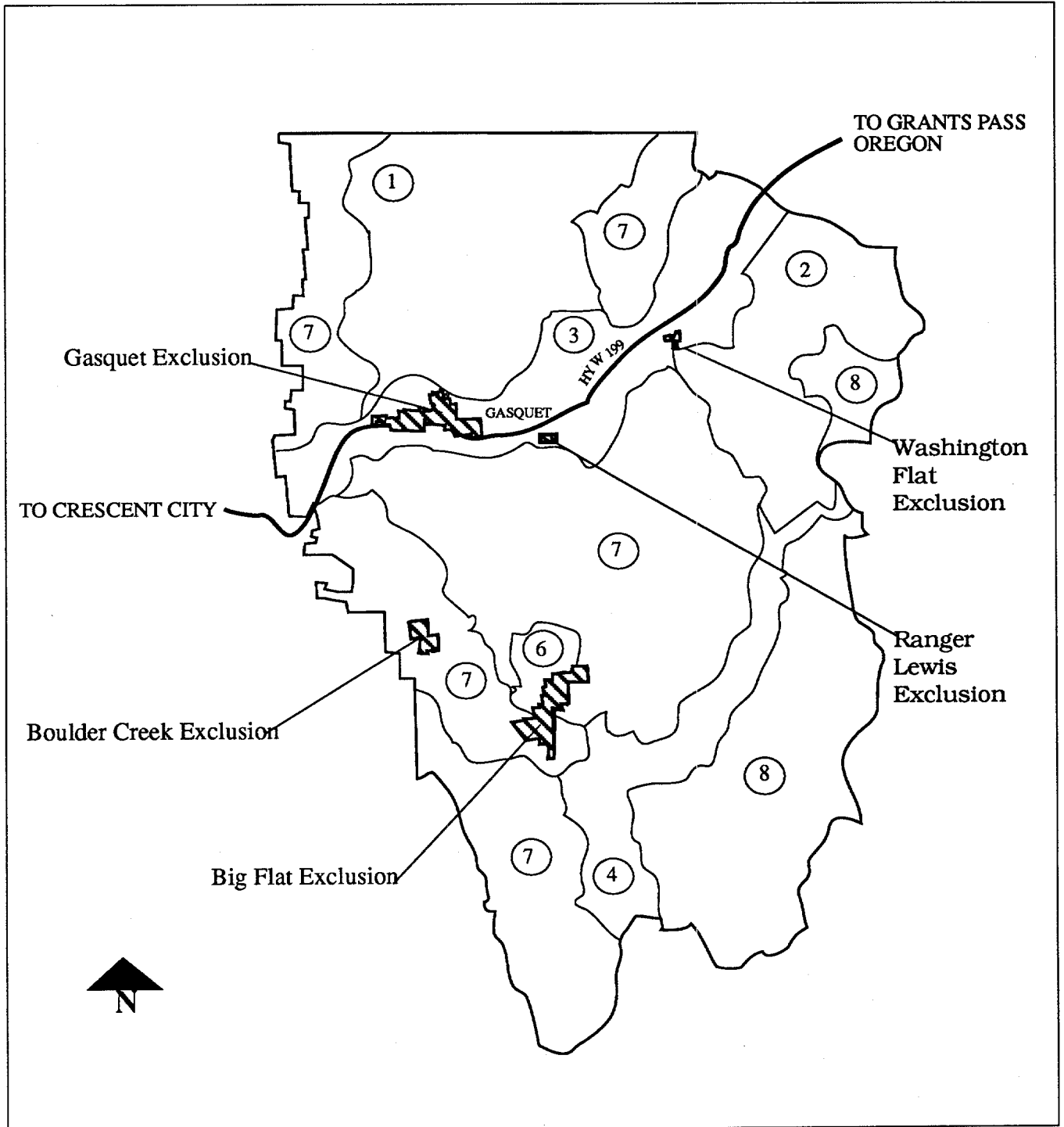
1/4 mile corridor = 320 acres /mile. 1/8 mile corridor = 160 acres/mile. 300 foot corridor = 72.7 acres/mile.



*Smith River*  
National Recreation Area

**Wild & Scenic Rivers  
River Classification Map**





*Smith River*  
National Recreation Area

**Excluded Areas**

The Six Rivers National Forest gratefully acknowledges the following individuals for their contributions to the development and completion of the Smith River National Recreation Area Management Plan.

**Concept:** Congressman Doug Bosco  
Bruce Taylor - Congressional Aid  
James L. Davis, Jr. - Forest Supervisor  
Jan Seils - Deputy Forest Supervisor  
Gene Brock - District Ranger  
Gail Grifantini - Forest Planner  
Smith River Alliance  
Del Norte County Task Force

**Text:** Gail Grifantini - Forest Planner  
Chris Knopp - Forest Planning Hydrologist  
Dave Webb - District Silviculturist  
Karen Caldwell - Asst. District Ranger  
Meridith Smith - Forest Lands Specialist  
Lucy Salazar - Forest Fuels Specialist  
Gail Otero - Wildlife Biologist  
Mike Furniss - Hydrologist  
Linda Walker - Recreation Planner  
George Albert - Visual Information Specialist

**Maps:** Dennis McKinnon - Forest Engineer  
Don Pass - District Forester  
Marlette Grant-White - Engineering Technician  
Janna Larson - District Landscape Architect

**Layout/Photos/Illustrations:**

Janna Larson - District Landscape Architect